

13

St. Raphael

The St. Michael and St. Raphael buildings are connected at gate 5 - Navamintmaharaj. At this point is ¹⁰a marble spiral stairway, the highest one in Thailand. The wrought-iron banister that curls up to the fourth floor resembles that of The Louvre Palace in Paris. Each step is wide and shallow. On the way up one sees white winged angels blowing small trumpets overhead.

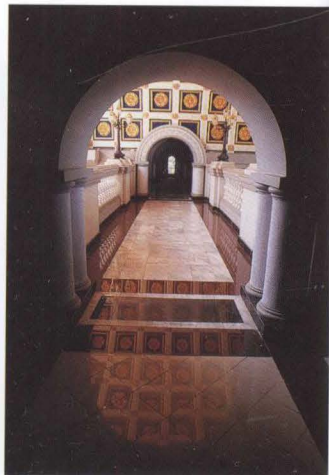


10



St. Raphael

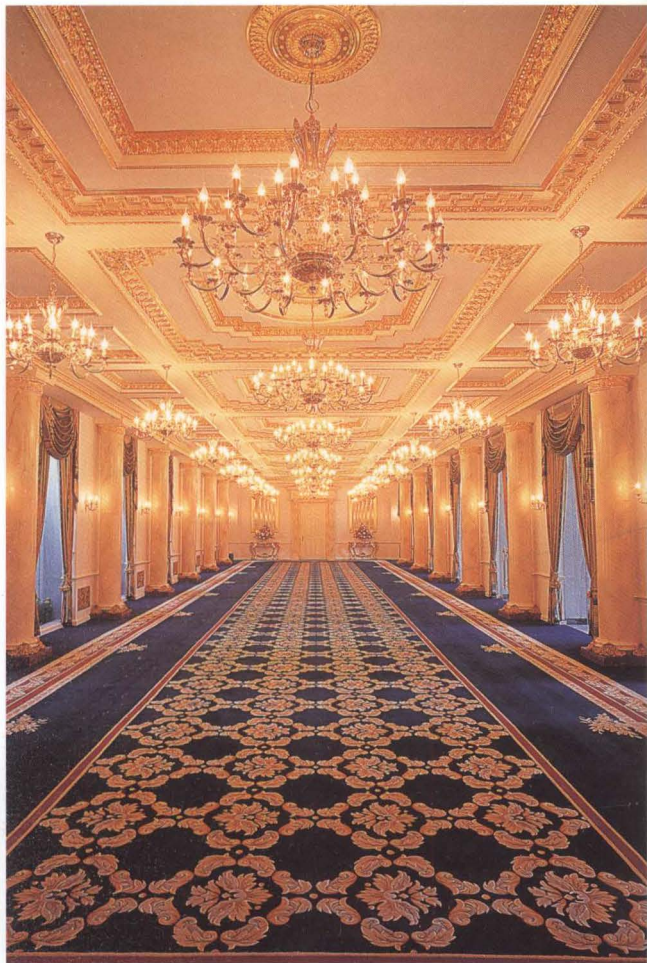
The arched doorway in the middle of the St. Raphael Building is the sixth of seven gates in the three main buildings. It is named Prasart Assumption. Looking down from the porch one sees the entry to the underground car park. The walls at this point are also painted in Thai themes. One of the two murals depicts ¹¹ the Temple of the Emerald Buddha with its spectacular spires, tiered roofs and pagodas. The other is a painting of ¹² the Royal Barge Suphannahongse floating in the Chao Phraya River, with the Temple of Dawn in the background.



St. Raphael

1112

St. Raphael



13



14

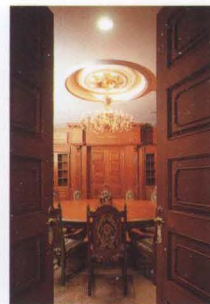
15

St. Raphael

On the ground floor of the St. Raphael Building are the ¹³ Grand Salon; a ¹⁴ VIP room; ¹⁵ the Office of the President; ¹⁶ University Archives and ¹⁷ President Emeritus. The salon, beautifully adorned with carpets and elegant furniture, is used for the Academic Award Ceremony.



15



16



17



St. Raphael

Above the seventh gate, called Thewan Raksa, is also a domed roof painted ivory, known as the ivory tower, under which is a teacher's lounge that can only be reached by a spiral stairway from the fourth floor. The murals in the ivory tower depict scenes from the famous Ramakien. ¹⁸The history of Au is inscribed on the external wall of the ground floor and opposite it is a white statue of ¹⁹St. Paul, one of Jesus' disciples. St. Paul was a writer of great wisdom whose writing helped spread Christianity. One of his great literary works is "What is love?"



18



19

