



Practical Development of Information System in Business Context:
Inventory and Production System for Hiwa Interpack Co., Ltd.

Mr. Atip Sangkaew
Mr. Kittipong Buddhasuwan

Submitted in Partial Fulfillment
of the Course BC 4500 280 Hour Training Program
Bachelor's Degree of Business Administration
in Business Computer Program
Assumption University

December 2002

Project Name: Production System, Hiwa Co.

Developers: Mr. Kittipong Buddhasuwan
Mr. Atip Sangkaew

Advisor: A. Dhirachat Chayaporn

Academic Year: December 2002

The Department of Business Information Systems, ABAC School of Management has approved the aforementioned project, which includes complete Project Write-up and System submitted in fulfillment of the 3-credit course BIS 4995 Information System Development towards the requirements for the Bachelor's Degree of Business Administration in Business Information Systems

Advisory Committee:



(A.Dhirachat Chayaporn)
Advisor



(A.Patamate Darnphitsanupan)
Chairperson



(A.Somchai Chaowapatanawong)
Member



(A.Yootthapong Chotiwan)
Member

December 2002

Practical Development of Information System in Business Context:

Inventory and Production System for Hiwa Interpack Co., Ltd.

Advisor: A. Dhirachat Chayaporn



PROJECT WRITE-UP

Prepared by

Mr. Atip Sangkaew

ID: 4021652

Mr. Kittipong Buddhasuwan

ID: 3914371

Submitted in Partial Fulfillment
of the Course BC 4500 280 Hour Training Program
Bachelor's Degree of Business Administration
in Business Computer Program
Assumption University

December 2002

TABLE OF CONTENTS

Chapter	Page
LIST OF FIGURES	i
LIST OF TABLES	ii
I. INTRODUCTION	1
1.1 Background of Organization	1
1.2 Objectives of the System	2
1.3 Scope of the System	2
1.4 Project Plan	3
II. THE EXISTING SYSTEM	5
2.1 Background of Existing System	5
2.2 Problem Definition	5
III. THE PROPOSED SYSTEM	6
3.1 System Specification	6
(1) Hardware Requirements	6
(2) Software Requirements	6
3.2 System Design	8
(1) Data Flow Diagram	8
(2) Entity-Relationship Diagram	14
(3) Database Design	15
(4) Process Specification	17
(5) Data Dictionary	29
(6) Interface Design	37
(7) Report Design	40

IV. SYSTEM IMPLEMENTATION	42
4.1 Overview of System Implementation	42
4.2 Test Plan	42
V. CONCLUSIONS AND RECOMMENDATIONS	43
5.1 Conclusions	43
5.2 Recommendations	43
 APPENDIX A DATABASE DESIGN	 44
APPENDIX B INTERFACE DESIGN	56
APPENDIX C REPORT DESIGN	91
BIBLIOGRAPHY	105



LISTS OF FIGURES

Figure	Page
1-1 Organization Chart	2
1-2 Project Plan	4
2-1 Context Diagram of Existing System	5
3-1 Context Diagram of Proposed System	8
3-2 Data Flow Diagram – Level 0	9
3-3 Data Flow Diagram – Level 1 Process 1	10
3-4 Data Flow Diagram – Level 1 Process 2	11
3-5 Data Flow Diagram – Level 1 Process 3	12
3-6 Data Flow Diagram – Level 1 Process 4	13
3-7 Entity-Relationship Diagram	14
B-1 Main Menu Form	57
B-2 Inventory Menu Form	58
B-3 Add New Customer Form	59
B-4 Edit Customer Record Form	60
B-5 Check Raw Material On Hand Form	61
B-6 Add Raw Material Form	62
B-7 Edit Raw Material Record Form	63
B-8 Add Supplier Form	64
B-9 Edit Supplier Record Form	65
B-10 Set Cost & Price Form	66
B-11 Check Product Form	67
B-12 Update Stock Form	68

B-13 Add Order Form	69
B-14 Edit Order Form	70
B-15 Production Menu Form	71
B-16 Matching Form	72
B-17 Schedule Form	73
B-18 Machine Form	74
B-19 Security Menu Form	75
B-20 Add User Form	76
B-21 Change Preference Form	77
B-22 Delete User Form	78
B-23 Report Menu Form	79
B-24 Customer Order Report Form	80
B-25 Order Change Report Form	81
B-26 Order Deleted Report Form	82
B-27 Customer Change Report Form	83
B-28 Customer Transaction History Report Form	84
B-29 Request Order Report From Form	85
B-30 Raw Material Installed Report Form	86
B-31 Raw Material Change Report Form	87
B-32 Supplier Change Report Form	88
B-33 Cost Change Report Form	89
B-34 Product Change Report Form	90
C-1 Customer Order Report	91
C-2 Order Change Report	92
C-3 Order Deleted Report	93

C-4	Customer Change Report	94
C-5	Customer Transaction Report	95
C-6	Request Order Report	96
C-7	Request Order Waiting List Report	97
C-8	Raw Material Report	98
C-9	Raw Material Change Report	99
C-10	Supplier Change Report	100
C-11	Cost Change Report	101
C-12	Product Change Report	102
C-13	Job Complete Report	103



LIST OF TABLES

Table	Page
3.1 Hardware Requirements	6
3.2 Software Requirements	6
3.3 Process Specification for Process 1.0	17
3-4 Process Specification for Process 1.1	18
3-5 Process Specification for Process 1.2	18
3-6 Process Specification for Process 1.3	19
3-7 Process Specification for Process 1.4	19
3-8 Process Specification for Process 1.5	19
3-9 Process Specification for Process 2.0	20
3-10 Process Specification for Process 2.1	20
3-11 Process Specification for Process 2.2	21
3-12 Process Specification for Process 2.3	21
3-13 Process Specification for Process 2.4	22
3-14 Process Specification for Process 2.5	22
3-15 Process Specification for Process 3.0	22
3-16 Process Specification for Process 3.1	23
3-17 Process Specification for Process 3.2	24
3-18 Process Specification for Process 3.3	24
3-19 Process Specification for Process 3.4	25
3-20 Process Specification for Process 3.5	25
3-21 Process Specification for Process 4.0	25
3-22 Process Specification for Process 4.1	26

3-23 Process Specification for Process 4.2	27
3-24 Process Specification for Process 4.3	27
3-25 Process Specification for Process 4.4	27
A-1 Cost & Price Table	48
A-2 Cost & Price Change Table	48
A-3 Customer Table	49
A-4 Customer Change Table	49
A-5 Job Table	50
A-6 LogIn Table	51
A-7 Match Table	51
A-8 Order Table	52
A-9 Order Change Table	52
A-10 Product Table	53
A-11 Product Change Table	54
A-12 Raw Material Table	54
A-13 Raw Material Change Table	55
A-14 Request Order Table	55
A-15 Schedule Table	56
A-16 Schedule Detail (ProSchDetail) Table	56
A-17 Supplier Table	57
A-18 Supplier Change Table	58

I. INTRODUCTION

1.1 Background of the Organization

In 1975, Hiwa International Co., Ltd. was established by Mr.Suthep and Mrs.Roongvilai Suwannagate. The company was doing business as a manufacturer of Carton Boxes. The process just printing and finishing the carton boxes. The business was growing fast. The owners of the company had a vision of expand their business. They established a new plant in the year 1982, bought an corrugator machine in order to producing sheet board paper under the name Hiwa Interpack Co., Ltd. The company was continuing expand. In 1987, R.S.Press Co., Ltd was established in order to provide printing material products. Also in this year Hiwa Interpack Co., Ltd was set up a new corrugator machine line to satisfy their customer demand. 2 years after, R.S.Press Co., Ltd was purchased a brand new Roland printer machine. To celebrate of the brand new machine, the owner Mr.Suthep were selected to take doctorate degree from Kensington University, California, U.S.A. Dr.Suthep continuing develop their business. Hiwa Interpack Co., Ltd purchased new corrugator machine to satisfy their customer demand in 1993. Nowaday Hiwa Interpack Co., Ltd has 3 lines of corrugated sheet board paper machine. The capacity of Hiwa Interpack Co., Ltd becomes 70,000 tons per year. The management system has to expand by the side.

Location

127 Moo 7 Petchkasem 81 Rd. Suanluang, Kratoomban, Samutsakorn

Structure

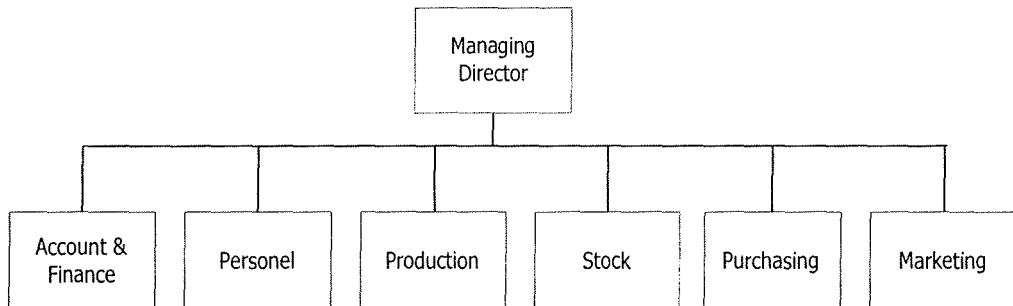


Figure 1-1 Organization Chart

Job Description

- Corrugated Board : Produce Single Wall and Double Wall Corrugated Paper Board through the scheduled customer order.
- Single Face Sheet : Produce Single Face Corrugated Sheet through the Scheduled customer order.

1.2 Objectives of the System

- (1) To reduce the time of Production Planning.
- (2) To provide the correct calculation of Raw Materials required.
- (3) To reduce the production cost.
- (4) Report immediately while the job done.
- (5) More effective in controls the machine.

1.3 Scope of the System

- (1) Inventory Management System.
- (2) Production Planning System.

1.4 Project Plan

The tentative plan for this project: “Production & Stock Management of Hiwa Interpack Co., Ltd.” is exhibited in Figure.



No.	Task Name	September				October				November				December			
		1	2	3	4	1	2	3	4	1	2	3	4	1	2	3	4
	I. Analysis of the Existing System																
1.	Study the Existing System																
2.	Identify the Existing Problems																
3.	Existing Data Flow Diagram																
	II. Preliminary Investigation																
4.	Define the objectives and scope																
5.	Hardware Requirements																
6.	Software Requirements																
	III. Analysis and Design of the Proposed System																
7.	Entity-Relationship Diagram																
8.	Database Design																
9.	Data Flow Diagram																
10.	Process Specification																
11.	Data Dictionary																
12.	Interface Design																
13.	Report Design																
	IV. Implementation of the Proposed System																
14.	Coding																
15.	Testing																
16.	Documentation																

Figure 1-2 Project Plan for : Production & Stock Management of Hiwa Interpack Co., Ltd

II. THE EXISTING SYSTEM

2.1 Background of Existing System

The Company already has some hardware and software used in some departments. In Department of Production still using manual operation with no document control system.

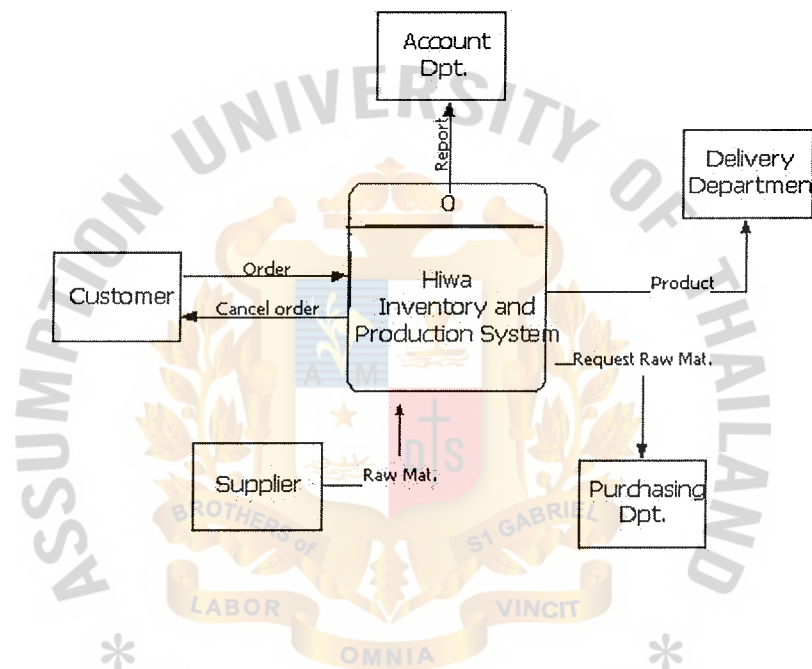


Figure 2-1 Context Diagram of Existing System

2.2 Problem Definition

- (1) The Production Planning consume much time.

The Production Planning Step stills using manual calculation. Its caused many errors in the calculation of Raw Material required.

- (2) No authorities of Decision Logic System.

All of decision were made by the Managing Director.

- (3) High Cost of Production.

Wrong calculation of Raw Material required in production caused high waste.

III. THE PROPOSED SYSTEM

3.1 System Specification

(1) Hardware Requirements

Table 3-1 Hardware Requirements

HAREWARE	SPECIFICATION
CPU	CPU Pentium III 800
RAM	SD-RAM 256 Mb
Hard disk	HDD 40 GB

We Desired to use CPU Pentium III 800 because now in the market when compare the potential with cost CPU Pentium III 800 is the best and Pentium is more reliable than other CPU. We use SD-RAM 256 Mb because SD-RAM is Cheapest and not necessary to use other type of RAM because SD-RAM speed can handle system tasks. Hard disk we choose HDD 40 GB This spec of hard disk can handle can keep all of data for many decades.

(2) Software Requirements

Table 3-2 Software Requirements

SOFTWARE	SPECIFICATION
Operating System	Microsoft Window 2000
Application	Microsoft Visual Basic 6.0 & Microsoft Access 97

We choose Microsoft Window 2000 because the company already uses it as their Operating system and it is stable and reliable enough for our system and we developed the system by using Microsoft Visual Basic 6.0 because our

programmer expert in this application system the database we use Microsoft access 97 because company already have it and because our database design is not complicate so Microsoft Access 97 can be use.



3.2 System Design

(1) Data Flow Diagram

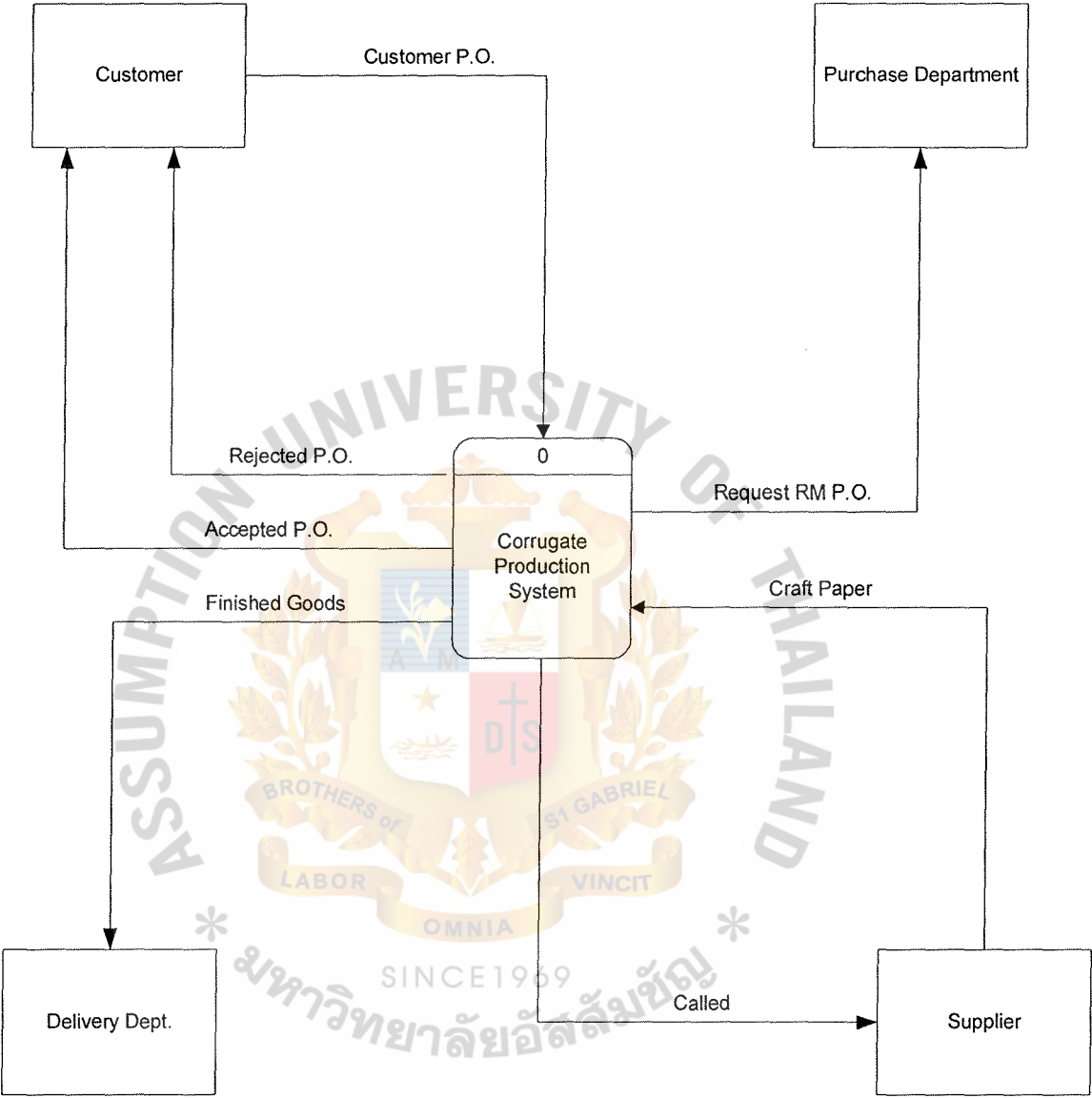


Figure 3-1 Context Diagram

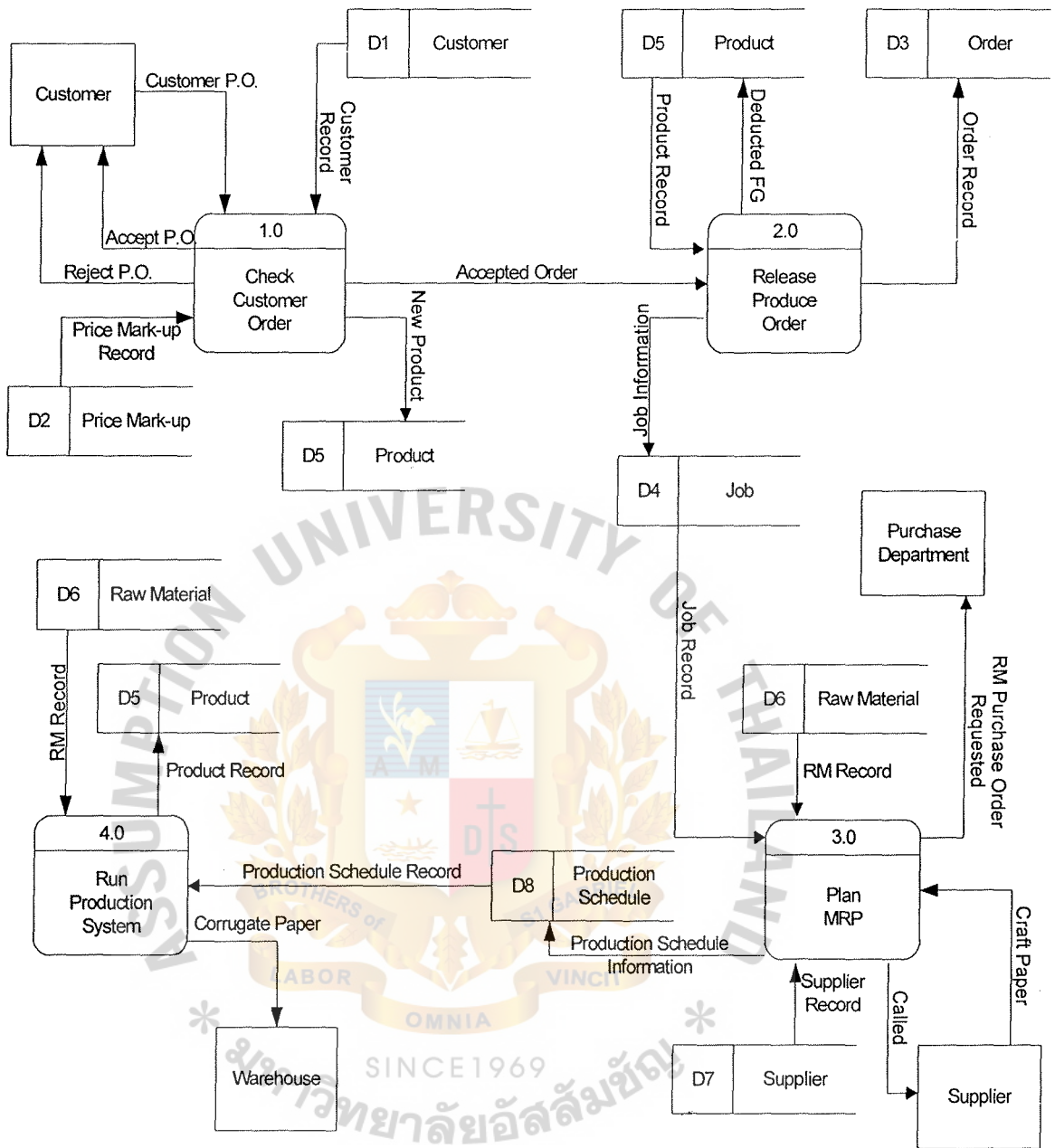


Figure 3-2 Data Flow Diagram - Level 0

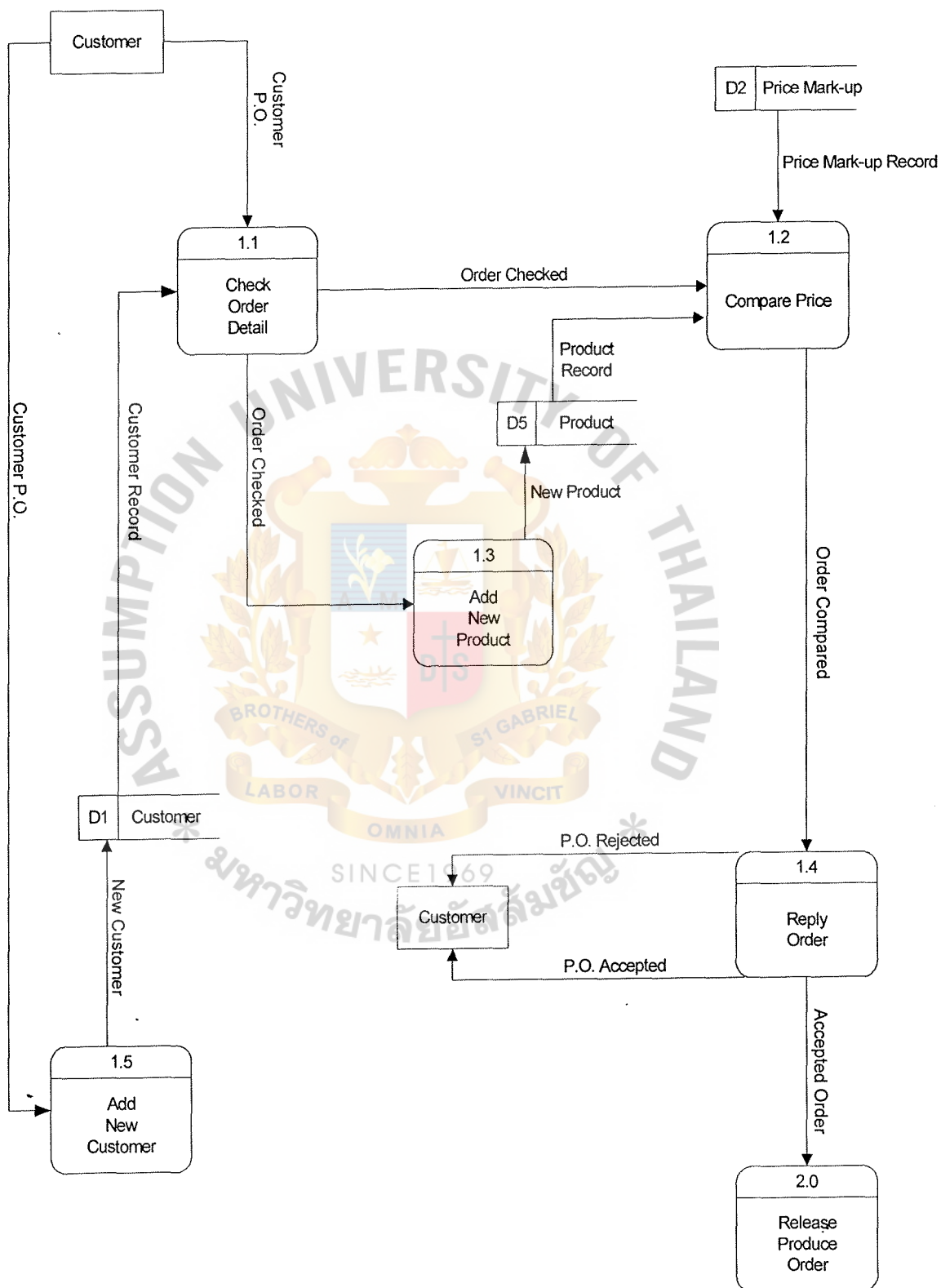


Figure 3-3 Data Flow Diagram – Level 1 for Process 1

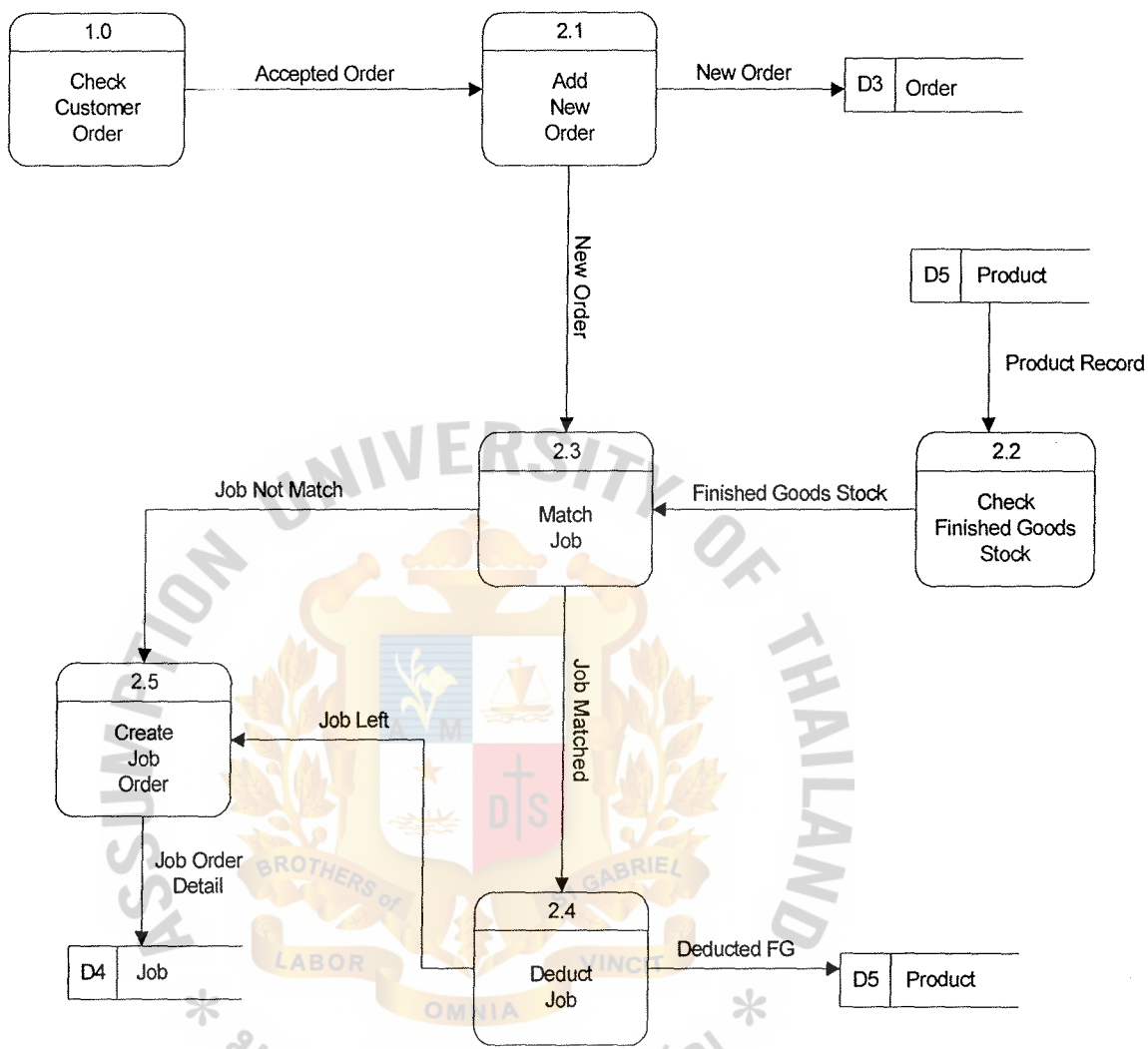


Figure 3-4 Data Flow Diagram – Level 1 for Process 2

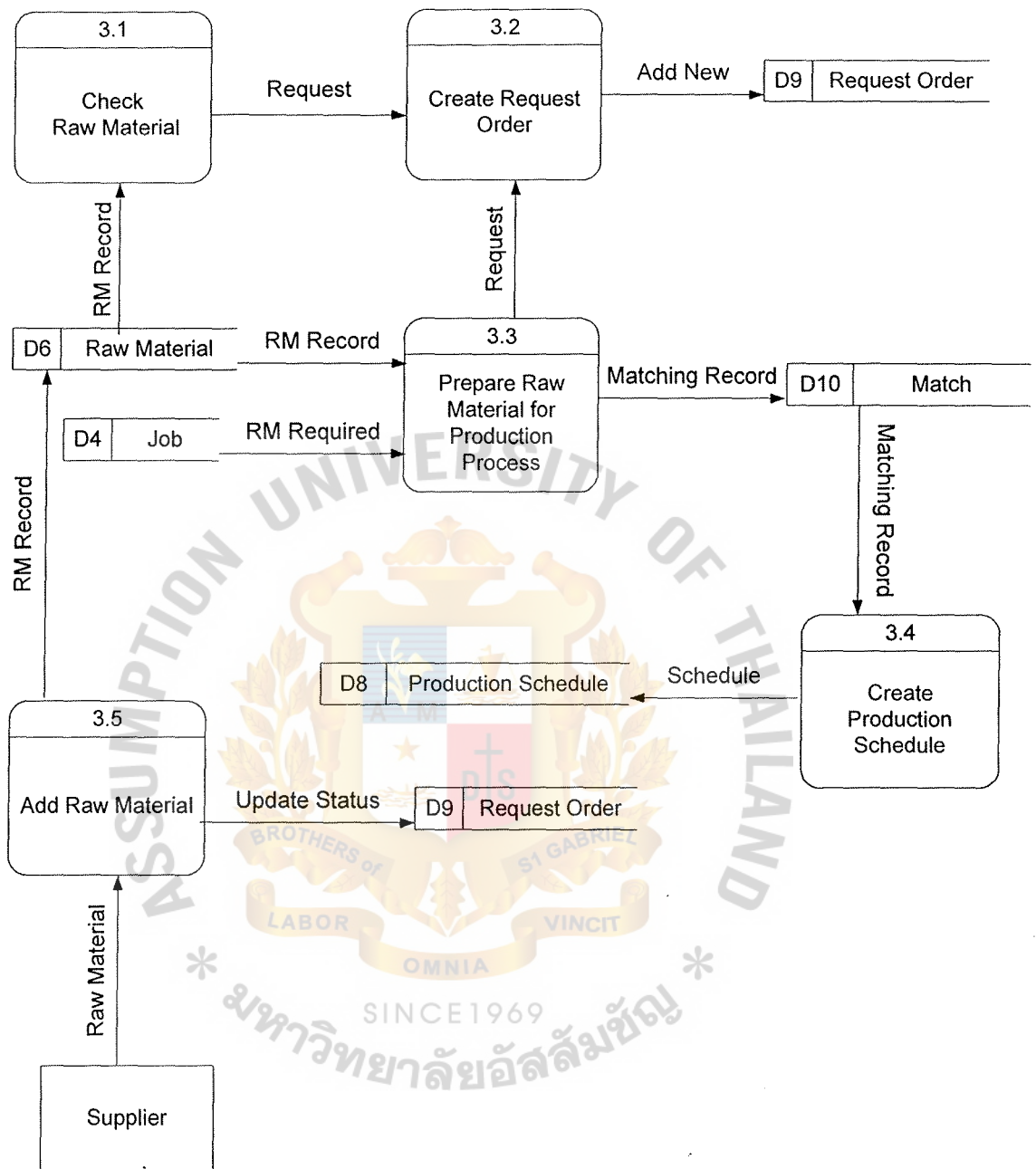


Figure 3-5 Data Flow Diagram – Level 1 for Process 3

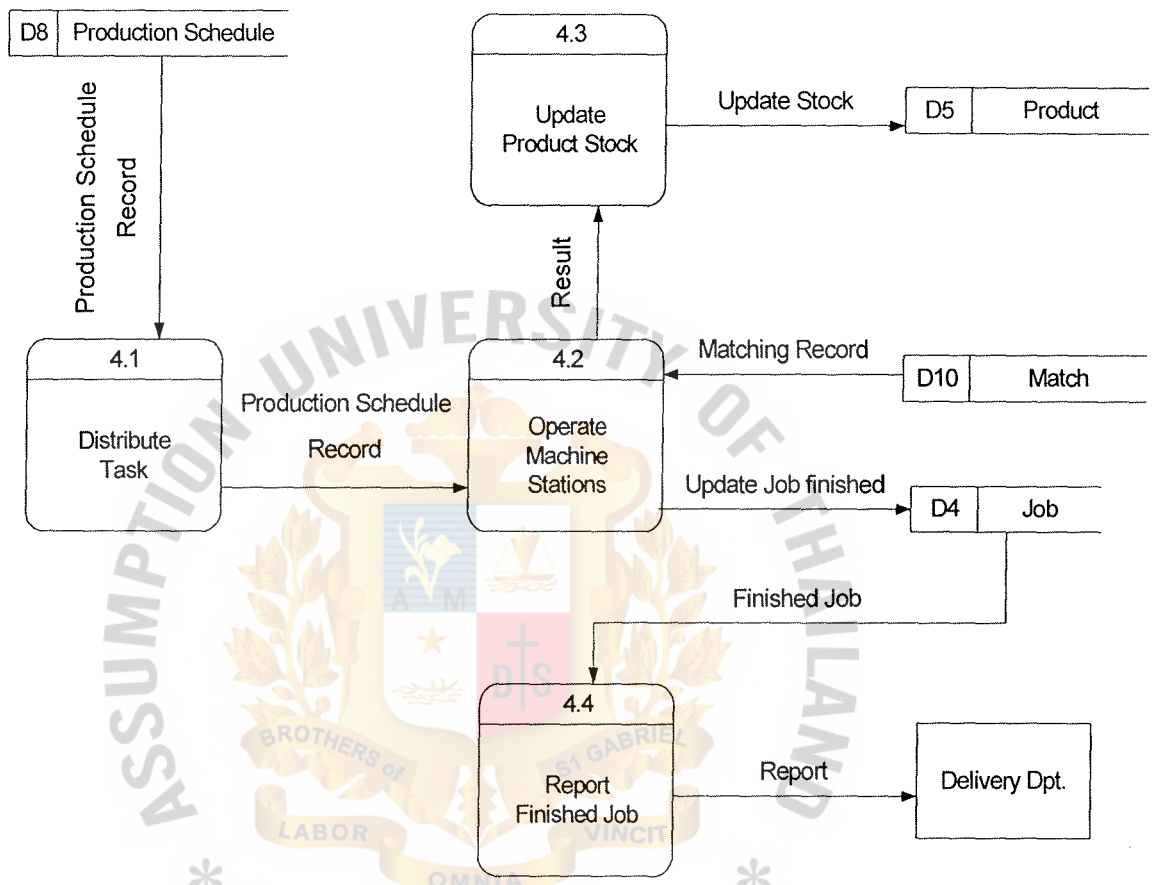


Figure 3-6 Data Flow Diagram – Level 1 for Process 4

(2) Entity-Relationship Diagram

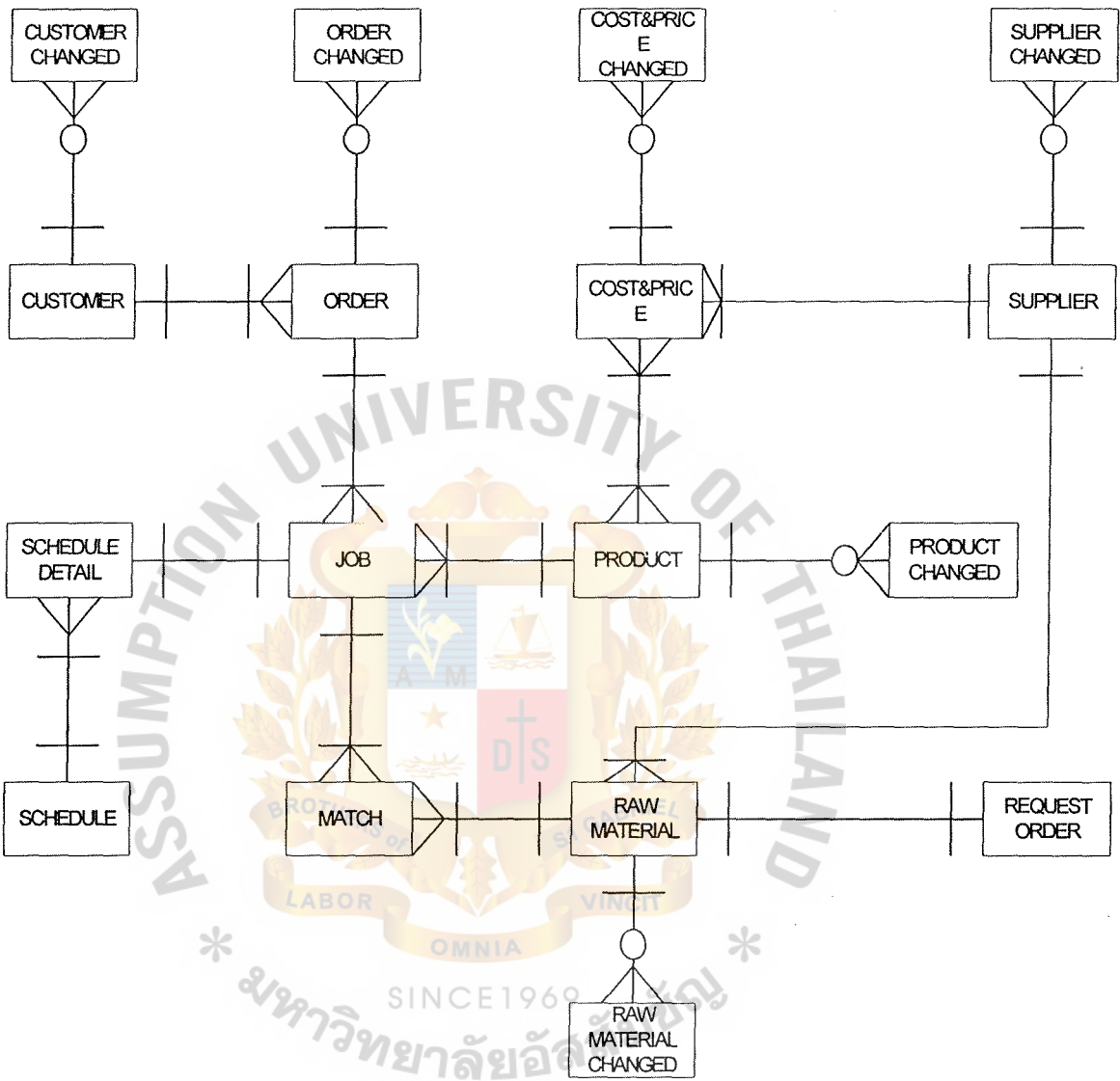


Figure 3-7 Entity-Relationship Diagram

(3) Database Design

There is 18 table of the database

1. Cost & Price Table - Keep all current cost/kg, supplier, and price/kg of each grade of raw material (craft paper).
2. Cost & Price Change Table – Keep record all change occur on cost/kg, supplier, and price/kg of each grade of raw material (craft paper).
3. Customer Table – Keep current information of customer.
4. Customer Change Table - Keep record all change occur on Customer.
5. Job Table – Keep in formation and status of job.
6. Login Table – Keep user name , Password and status of authority and login.
7. Match Table – Keep the result of matching between raw material and job.
8. Order Table – Keep information and status of the order.
9. Order Change Table – Keep information of change in each order.
10. Product Table – Keep the information and stock of product.
11. Product Change Table – Keep information of changing of stock of the product.
12. Raw Material Table – Keep information and stock of raw material.
13. Raw Material Change Table – keep information of changing of raw material.
14. Request Order Table – Keep Information and status of request order.
15. Schedule Table – Keep information and status of Production schedule.

16. Schedule Detail Table – Keep the detail in the Production Schedule (Job).
17. Supplier Table – Keep current information and cost of supplier.
18. Supplier change Table – Keep information of all Change occur on supplier.

Database Design is exhibited in Appendix C



(4) Process Specification

Table 3-3 Process Specification for Process 1.0

Process Name:	Check Customer Order
Data In:	<ul style="list-style-type: none"> (1) Customer Record (2) Customer P.O. (3) Price Mark-Up Record
Data Out:	<ul style="list-style-type: none"> (1) Accept P.O. (2) Reject P.O. (3) Accepted Order
Process:	<ul style="list-style-type: none"> (1) Check P.O. detail with customer record (2) Compare asking price with price mark-up record (3) If product not in the list then add to record (4) If customer not in the list then add to record (5) If asking price is equal or more than price mark-up then accept P.O. (6) If asking price is less than price mark-up then reject P.O.
Attachment:	<ul style="list-style-type: none"> (1) Customer (2) Data Store D1 (3) Data Store D2 (4) Data Store D5 (5) Process 2.0

Table 3-4 Process Specification for Process 1.1

Process Name:	Check Order Detail
Data In:	(1) Customer P.O. (2) Customer Record
Data Out:	(1) Order Checked
Process:	(1) Check customer is or is not in bad debt record
Attachment:	(1) Customer (2) Data Store D1 (3) Process 1.2 (4) Process 1.3

Table 3-5 Process Specification for Process 1.2

Process Name:	Compare Price
Data In:	(1) Order Checked (2) Product Record (3) Price Mark-Up Record
Data Out:	(1) Order Compared
Process:	(1) Compare customer asking price with mark-up price
Attachment:	(1) Data Store D2 (2) Data Store D5 (3) Process 1.1 (4) Process 1.4 (5) Process 1.5

Table 3-6 Process Specification for Process 1.3

Process Name:	Add New Product
Data In:	(1) Order Checked
Data Out:	(1) New Product
Process:	(1) Add new product to product record
Attachment:	(1) Data Store D5 (2) Process 1.1

Table 3-7 Process Specification for Process 1.4

Process Name:	Reply Order
Data In:	(1) Order Compared
Data Out:	(1) P.O. Rejected (2) P.O. Accepted (3) Accepted Order
Process:	(1) Reply the order to customer.
Attachment:	(1) Customer (2) Process 1.2 (3) Process 2.0

Table 3-8 Process Specification for Process 1.5

Process Name:	Add New Customer
Data In:	(1) Customer P.O.
Data Out:	(1) New Customer
Process:	(1) Reject P.O. and notice to customer
Attachment:	(1) Customer

	(2) Data Store D1
--	-------------------

Table 3-9 Process Specification for Process 2.0

Process Name:	Release Produce Order
Data In:	(1) Accepted Order (2) Product Record
Data Out:	(1) Order Record (2) Job Information
Process:	(1) Record new order (2) Split order into each job (3) Get FG on hand information (4) Match job with FG on hand (5) If job match with FG on hand then deduct it and create job order for the rest (6) If job not match create job order
Attachment:	(1) Data Store D3 (2) Data Store D4 (3) Data Store D5 (4) Process 1.0

Table 3-10 Process Specification for Process 2.1

Process Name:	Add New Order
Data In:	(1) Accepted Order
Data Out:	(1) New Order
Process:	(1) Add new order to order record

Attachment:	(1) Data Store D3 (2) Process 1.0 (3) Process 2.2
-------------	---

Table 3-11 Process Specification for Process 2.2

Process Name:	Check Finished Goods Stock
Data In:	(1) Product Record
Data Out:	(1) Finished Goods Stock
Process:	(1) Get FG on hand information from product record
Attachment:	(1) Data Store D5 (2) Process 2.3

Table 3-12 Process Specification for Process 2.3

Process Name:	Match Job
Data In:	(1) New Job (2) Finished Goods Stock
Data Out:	(1) Job Match (2) Job Not Match
Process:	(1) Match job with FG on hand
Attachment:	(1) Process 2.1 (2) Process 2.2 (3) Process 2.4 (4) Process 2.5

Table 3-13 Process Specification for Process 2.4

Process Name:	Deduct Job
Data In:	(1) Job Matched
Data Out:	(1) Deducted Finished Goods (2) Job Left
Process:	(1) Deduct job with existing FG (2) Create job order for the rest
Attachment:	(1) Data Store D5 (2) Process 2.3 (3) Process 2.5

Table 3-14 Process Specification for Process 2.5

Process Name:	Create Job Order
Data In:	(1) Job Not Match (2) Job Left
Data Out:	(1) Job Order Detail
Process:	(1) Create job order and add to job record
Attachment:	(1) Data Store D4 (2) Process 2.3 (3) Process 2.4

Table 3-15 Process Specification for Process 3.0

Process Name:	Plan MRP
Data In:	(1) Job Record (2) Raw Material Record

	(3) Craft Paper (4) Supplier Record
Data Out:	(1) Request Raw Material Order (2) Production Schedule Record
Process:	(1) Get RM and Job information (2) Request RM P.O. (3) Receive craft paper from supplier (4) Add new production schedule information
Attachment:	(1) Purchase Department (2) Staff (3) Data Store D4 (4) Data Store D6 (5) Data Store D7 (6) Data Store D8

Table 3-16 Process Specification for Process 3.1

Process Name:	Check Raw Material
Data In:	(1) Raw Material Record
Data Out:	(1) Request
Process:	(1) Get RM information (2) Check that is it enough?
Attachment:	(1) Data Store D6 (2) Process 3.2

Table 3-17 Process Specification for Process 3.2

Process Name:	Create Request Order
Data In:	(1) Request
Data Out:	(1) Add New
Process:	(1) Receive request for RM order (2) Create request order
Attachment:	(1) Data Store D9 (2) Process 3.1 (3) Process 3.3

Table 3-18 Process Specification for Process 3.3

Process Name:	Prepare Raw Material for Production Process
Data In:	(1) RM Record (2) RM Required
Data Out:	(1) Request (2) Matching Record
Process:	(1) Create RM require (2) Get RM record and job require (3) Matching RM with job
Attachment:	(1) Data Store D4 (2) Data Store D6 (3) Data Store D9 (4) Data Store D10 (5) Process 3.2

Table 3-19 Process Specification for Process 3.4

Process Name:	Create Production Schedule
Data In:	(1) Matching Record
Data Out:	(1) Schedule
Process:	(1) Get matching record (2) Create new schedule
Attachment:	(1) Data Store D8 (2) Data Store D10

Table 3-20 Process Specification for Process 3.5

Process Name:	Add Raw Material
Data In:	(1) Raw Material
Data Out:	(1) Update Status (2) RM Record
Process:	(1) Receive RM from supplier (2) Add new information of RM (3) Check status of RM for arriving
Attachment:	(1) Supplier (2) Data Store D6 (3) Data Store D9

Table 3-21 Process Specification for Process 4.0

Process Name:	Run Production System
Data In:	(1) Production Schedule Record (2) Raw Material Record

Data Out:	(1) Product Record (2) Corrugate Paper
Process:	(1) Get production schedule record (2) Get RM record (3) Add FG information to product record (4) Keep FG into warehouse
Attachment:	(1) Warehouse (2) Data Store D5 (3) Data Store D6 (4) Data Store D8

Table 3-22 Process Specification for Process 4.1

Process Name:	Distribute Task
Data In:	(1) Production Schedule Record (2) Raw Material
Data Out:	(1) Task 1 (2) Task 2 (3) Task 3
Process:	(1) Get RM and production schedule record (2) Distribute task to its work station
Attachment:	(1) Data Store D6 (2) Data Store D8 (3) Process 4.2 (4) Process 4.3 (5) Process 4.4

Table 3-23 Process Specification for Process 4.2

Process Name:	Operate Machine Station
Data In:	(1) Production Schedule Record (2) Matching Record
Data Out:	(1) Result (2) Update Job Finished
Process:	(1) Running job according schedule. (1) Keep finished job in job file.
Attachment:	(1) Process 4.1 (2) Process 4.3 (3) Data Store 4 (4) Data Store 10

Table 3-24 Process Specification for Process 4.3

Process Name:	Update Product Stock
Data In:	(1) Result
Data Out:	(1) Updated Stock
Process:	(1) Update the change in product stock.
Attachment:	(1) Process 4.2 (2) Data Store D5

Table 3-25 Process Specification for Process 4.4

Process Name:	Report Finished Job
Data In:	(1) Finished Job
Data Out:	(1) Report

Process:	(1) Inform Delivery Department about finished goods.
Attachment:	(1) Delivery Department (2) Data Store D4



(5) Data Dictionary

Table 3-15 Data Dictionary of Order Processing System Database

Field Name	Meaning
Accepted Order	*The customer order that company accept *
Address	*Address of customer or supplier * *Address No. + Road + City *
Ask Price	*Customer request product price * *unit: Baht; range: 00.00 *
Bad List	*The finance status of customer * *[Yes No] *
Cheap Price	*The cheapest price of craft paper * *unit: Baht; range: 00.00 *
Company	*Name of customer's or supplier's company * *{legal-character} *
Contact Person	*Sales or purchaser of company *
Cost	*Cost of the product sold by the supplier to our company * *unit: Baht; range: 00.00 *
Cost of A	*Cost of raw material A * *unit: Baht; range: 00.00 *
Cost of I	*Cost of raw material I * *unit: Baht; range: 00.00 *
Cost of M	*Cost of raw material M * *unit: Baht; range: 00.00 *
Cost of SW	*Cost of raw material SW *

	*unit: Baht; range: 00.00 *
Cost/kg.	*Cost of the product sold by the supplier to our company per kilogram *
Craft Paper	*Raw material *
Craft paper Available	*Supplier have craft paper on hand *
	*RM. ID + RM. Name + Quantity *
Craft Paper Checked	*Check craft paper arrival *
	*RM. ID + RM. Name + Quantity *
Craft Paper Matched	*Match craft paper with job *
Craft Paper- Unavailable	*Supplier do not have craft paper on hand *
Credit Type	*Range of credit *
	*[Pay on purchase 7 days 15 days] *
Customer Name	*Customer's name *
	*{legal-character} *
Customer ID	*Identification number of customer *
	*{legal-character} *
Customer Information	* *
	*Cust. ID. + Company Name + Address + Tel. No. + Fax No. + Contact Person + Bad List + Credit Type *
Customer P.O.	*Customer's purchase order *
	Cust.Name + Address + Tel. No. + Fax No. + Contact person + P.O. ID. + OrderDate + ProductID.+ Ask Price + Quantity + DueDate

Customer Record	* *
Date Planned	*Arrange the date by nearest * *units: day/ month/ year; range: 1/ Jan/ '00-31/ Dec/ '99 *
Deducted FG	*Finished goods deducted *
Due Date	*The due date to send and receive product * *units: day/ month/ year; range: 1/ Jan/ '00-31/ Dec/ '99 *
Enough Stock	*Enough raw material stock on hand *
Fax No.	*Facsimile number * *{legal-character}9 *
Finished Goods- Information	*Information of finished goods * *ProductID. + Product Name + Width + Length + Quantity + Price *
Finished Goods Stock	*Stock on hand of finished goods *
Grade 1	*Grade of paper layer 1 *
Grade 2	*Grade of paper layer 2 *
Grade 3	*Grade of paper layer 3 *
Grade 4	*Grade of paper layer 4 *
Grade 5	*Grade of paper layer 5 *
Gram	*Thickness of paper * *units: gram *
In Date	*Install date of raw material * *units: day/ month/ year; range: 1/ Jan/ '00-31/ Dec/ '99 *

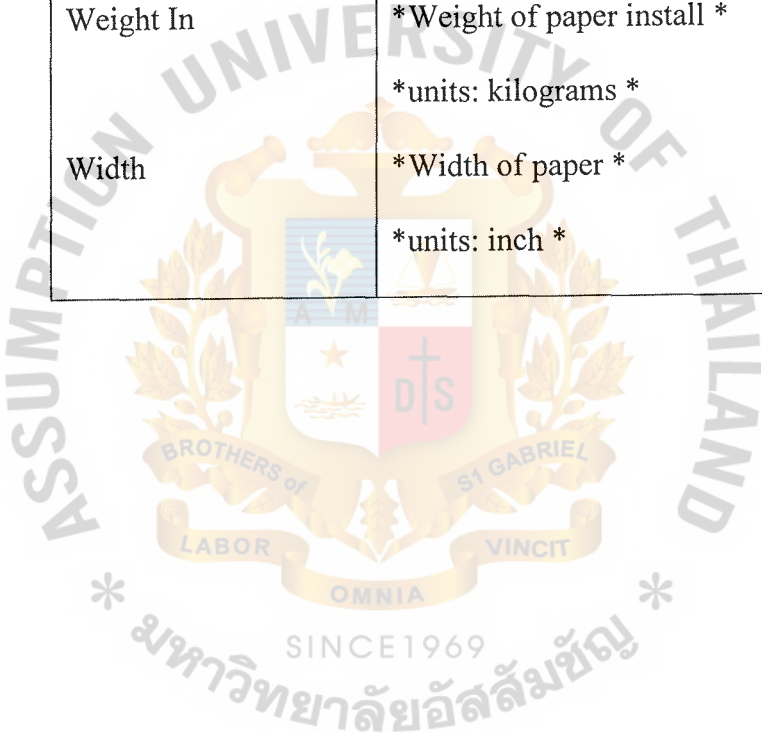
Job ID	*Identification number of job * *{legal-character} *
Job Left	*New job deduct by finished goods on hand *
Job Matched	*New job match with finished goods on hand *
Job Not Match	*New job not match with finished goods on hand *
Job Order Detail	*Information of job * *Job ID + Order ID. + Product ID. + Quantity + Job Run + Kg. 1 + Kg. 2 + Kg. 3 + Kg. 4 Kg. 5 + Due Date *
Job Record	* * *Job Order Detail *
Kg. 1	*Weight of paper layer 1* *units: kilogram *
Kg. 2	*Weight of paper layer 2* *units: kilogram *
Kg. 3	*Weight of paper layer 3* *units: kilogram *
Kg. 4	*Weight of paper layer 4* *units: kilogram *
Kg. 5	*Weight of paper layer 5* *units: kilogram *
Length	*Length of paper * *units: metre *
Length Planned	*Arrange the length of paper *

Net	<p>*Net price of product *</p> <p>*unit: Baht; range: 00.00 *</p>
New Customer	<p>* *</p> <p>*Customer information *</p>
New Job	<p>* *</p> <p>*Job Information *</p>
New Order	<p>* *</p> <p>*Order Information *</p>
New Product	<p>* *</p> <p>*Product Information *</p>
New Production - Schedule	<p>*Schedule of production *</p>
New RM.	<p>*New raw material *</p> <p>*Raw Material Information</p>
Not Enough Stock	<p>*Not enough raw material in stock *</p>
Order Checked	<p>*Check order detail *</p>
Order Compared	<p>*Order price compared with mark-up price *</p>
Order Date	<p>*Date on which customer place order to our company *</p> <p>*units: day/ month/ year; range: 1/ Jan/ '00-31/ Dec/ '99 *</p>
Order ID	<p>*Identification number of the order placed to our company by the customer *</p> <p>*{legal-character} *</p>
Other Supplier Called	<p>*Call other supplier for craft paper *</p>

P.O. Accepted	*Accept customer's P.O. *
P.O. No.	*Purchase order specific number * *{legal-character} *
P.O. Rejected	*Reject customer's P.O. *
Price	*Selling price of the product per item * *unit: Baht; range: 00.00 *
Price Mark-Up Record	* * *unit: Baht; range: 00.00 *
Price/kg.	*Selling price of the product per kilogram * *unit: Baht; range: 00.00 *
Product ID	*Identification number of product * *{legal-character} *
Production Schedule- Record	* * *Job ID. + Order ID. + Product ID. + Job Run Due Date *
Product Name	*Name of product * *{legal-character} *
Product Record	* * *Product ID. + Product Name + Width + Length + Quantity + Price *
Quantity	*Quantity of product or raw material *
RM. Deducted	*Deduct raw material by material used *
RM. P.O. Requested	*Request to order raw material *
RM. Record	* * *Grade + Gram + Width + Weight Available +

	P.O. No. + Supplier ID. + Supplier Name + Cost/Kg. + Weight Install + Install Date + Total Cost Install *
Raw ID	*Identification number of raw material * *{legal-character} *
Request Date	*Date of request raw material * *units: day/ month/ year; range: 1/ Jan/ '00-31/ Dec/ '99 *
Supplier Called	*Call supplier for craft paper *
Supplier ID	*Identification number of supplier * *{legal-character} *
Supplier Name	*Supplier's name * *{legal-character} *
T. Cost	*Total Cost * *unit: Baht; range: 00.00 *
Task 1	*Task of work station 1 *
Task 1 Completed	*Task of work station 1 completed *
Task 1 Material Used	*Material used by work station 1 *
Task 2	*Task of work station 2 *
Task 2 Completed	*Task of work station 2 completed *
Task 2 Material Used	*Material used by work station 2 *
Task 3	*Task of work station 3 *
Task 3 Completed	*Task of work station 3 completed *
Task 3 Material Used	*Material used by work station 3 *
Tel. No.	*Telephone number *

	*{legal-character} *
Total	*Total price of product * *unit: Baht; range: 00.00 *
VAT	*Value Add Tax * *unit: Baht; range: 00.00 *
Weight Available	*Weight of paper left * *units: kilograms *
Weight In	*Weight of paper install * *units: kilograms *
Width	*Width of paper * *units: inch *



(6) Interface Design

There are 31 Interfaces:

1. Login form - Let user log in to the system to identify who is using the system.
2. Main menu form - Let user choose the system they want to work (Inventory, Production, Report, Security).
3. Inventory menu form - Menu of all process in inventory system.
4. Add customer form - Add customer record.
5. Edit customer record form – Let user edit customer record.
6. Add Raw material form - Add raw material in the system.
7. Edit raw material form - Edit raw material information that may be have mistake on adding or check and update real weight of it.
8. Check raw material form - Check raw material on hand and make request order.
9. Add supplier form - Add supplier record to the system.
10. Edit supplier form - Edit supplier record update current cost of each grade of craft paper that each supplier sold us.
11. Set cost & price form - Set current supplier that we buy craft paper for each grade and price we will sell to customer.
12. Check Product Form – Check current product price when customer order product that not in list.
13. Edit Product Form – Update product stock when stock was checked for current status of product.
14. Add order Form – Add customer order each order can have many job.

15. Edit Order Form – Change order(delete job in order) or delete order (delete all job in order).
16. Production Menu Form – Menu of all process in production system.
17. Matching Form – Match job with raw material.
18. Add or Edit Schedule Form – Add new schedule or edit existing schedule.
19. Machine Form – Control machine working process
20. Report Menu Form – Menu of all report.
21. Customer Order Report Form – Choose range of date user want to see the report of order that was ordered by customer.
22. Order Change Report Form – Choose range of date user want to see the report of order that was changed (Decrease only).
23. Order Delete Report Form – Choose range of date user want to see the report of order that was deleted.
24. Customer Change Report Form – Choose customer that user want to see the report of all change history of customer.
25. Customer Transaction Report – Choose customer that user want to see the report of all transaction history of customer.
26. Request Order report form - Choose range of date user want to see the report of request order that was made in that period.
27. Raw Material Installed Report - Choose range of date or PO no. that user want to see the report of Raw material that was installed in that period.
28. Raw Material Change Report Form - Select raw material that user want to see all change history of that raw material.

29. Supplier Change Report Form – Select Supplier that user want to see all change history of that supplier.
30. Cost Change Report Form - Select grade of craft paper to see all change history of each grade.
31. Product Change Report Form – Select Product to see all change history of it.

The Interface Design is exhibited in Appendix B.



(7) Report Design

There are 13 reports

1. Customer order report - Report of order that was order in select range of date can be daily weekly or monthly or any range up to user selection.
2. Order change report - Report of order change in select range of date can be daily weekly or monthly or any range up to user selection.
3. Order Delete Report - Report of order delete in select range of date can be daily, weekly or monthly or any range of date up to user selected.
4. Customer Change Report - Report of all of customer change in the past till now.
5. Customer Transaction Report - Report of all customer transaction history.
6. Request Order Report - Report of request order that was made in select range of date can be daily weekly or monthly or any range up to user selection.
7. Request Order Waiting List Report - Report of request that are in waiting list.
8. Raw Material Report - Report of raw material install in select range of date can be daily weekly or monthly or any range up to user selection.
9. Raw Material Change - Report of all change history of raw material.
10. Supplier Change Report - Report of all change history of supplier.
11. Cost & Price Change History - Report of all change history of Cost & price of each grade.

12. Product Change Report - Report of all change history of Product.
13. Job Completed Report - Report of job complete in each day.

Report Design is exhibited in Appendix C



IV. SYSTEM IMPLEMENTATION

4.1 Overview of the System Implementation

The new system will be implemented to replace all work of the old system in both Inventory system and Production system by Direct Cut method. Because, the new system keep all data into database no need to use document to keep any data in the system any more this will save cost of the paper.

4.2 Test Plan

We use the Bottom Up Testing to test this program because it is easy to debugging and checking its code. We can check program while coding to make program more accuracy. We let the staff of this company who will be involved in program accompanying in testing it because they are the right person who will give us the right and accuracy information.

V. CONCLUSIONS AND RECOMMENDATIONS

5.1 Conclusions

This program will help Hiwa Interpack Co., Ltd. To operate their business easier and quicker than the old system because they will use the online system to run their business. The staff of this company can get information immediately whenever they want and the program can reduce the duplication of job that can occur during the operation. Hiwa Interpack Co., Ltd. can save cost of production because they use the online computer that can save the cost to spend for paper. The staff can work effectively because they have more time to do other job.

5.2 Recommendations

For the more effectiveness in using this program, Hiwa Interpack Co., Ltd. should let their staff who will be involved or affected to the program to get training. If the user of this program do not understand the system, the company will fail to successful in information system that support their business.



APPENDIX A
DATABASE DESIGN

Table A-1 Cost&Price Table

No.	Field Name	Field Type	Index	Unique	Nullable	Foreign Key	Check	Key Type
1	Grade	varchar (1)	Y	Y		Raw,Product	A,I,K,M	Primary Key
2	SupplierID	integer	Y					Foreign Key
3	Cost/Kg	Single	Y					Attribute
4	Price/Kg	Single	Y					Attribute

Table A-2 Cost&Price Change Table

No.	Field Name	Field Type	Index	Unique	Nullable	Foreign Key	Check	Key Type
1	Grade	varchar (1)	Y	Y		Raw,Product	A,I,K,M	Primary Key
2	SupplierID	integer	Y					Foreign Key
3	Cost/Kg	Single	Y					Attribute
4	Price/Kg	Single	Y					Attribute
5	EditDate	date					Dd/mm/yy	Attribute
6	User	Varchar(8)						Attribute

Table A-3 Customer Table

No.	Field Name	Field Type	Index	Unique	Nullable	Foreign Key	Check	Key Type
1	CustomerID	integer	Y	Y		Order		Primary Key
2	Company	varchar (50)	Y					Attribute
3	CustomerName	varchar (50)	Y					Attribute
4	Address	varchar (80)			Y			Attribute
5	Telephone	int (9)					<area code, 7 digits>	Attribute
6	Fax	int (9)					<area code, 7 digits>	Attribute
7	BadList	Yes/No	Y					Attribute
8	CreDit	Option					7days,15days,Pay on	Attribute

Table A-4 Customer Change Table

No.	Field Name	Field Type	Index	Unique	Nullable	Foreign Key	Check	Key Type
1	ID	integer	Y	Y				Primary Key
2	CustomerID	integer	Y					Foreign key
3	Company	varchar (50)	Y					Attribute
4	CustomerName	varchar (50)	Y					Attribute
5	Address	varchar (80)			Y			Attribute
6	Telephone	int (9)					<area code, 7 digits>	Attribute
7	Fax	int (9)					<area code, 7 digits>	Attribute
8	BadList	Yes/No	Y					Attribute
9	CreDit	Option					7days,15days,Pay on	Attribute
10	EditDate	date					Dd/mm/yy	Attribute
11	User	Varchar(8)						Attribute

Table A-5 Job Table

No.	Field Name	Field Type	Index	Unique	Nullable	Foreign Key	Check	Key Type
1	JobID	integer	Y	Y		Order Detail		Primary Key
2	OrderID	integer	Y					Foreign Key
3	ProductID	Varchar(14)	Y					Foreign Key
4	Asking Price	single	Y					Attribute
5	Quantity	int						Attribute
6	DueDate	date					Dd/mm/yy	Attribute
7	Weight1st	int			Y			Attribute
8	Weight2nd	int			Y			Attribute
9	Weight3rd	int			Y			Attribute
10	Weight4th	int			Y			Attribute
11	Weight5th	int			Y			Attribute
12	MachineRun	int			Y		Metres	Attribute
13	Matched	Yes/No					Yes/No	Attribute
14	Planned	Yes/No					Yes/No	Attribute
15	Completed	Yes/No					Yes/No	Attribute
16	DeleteM	Yes/No					Yes/No	Attribute
17	Delete	Yes/No					Yes/No	Attribute
18	User	Varchar(8)						Attribute

Table A-6 LogIn Table

No.	Field Name	Field Type	Index	Unique	Nullable	Foreign Key	Check	Key Type
1	User	varchar (8)	Y	Y		Many		Primary Key
2	Password	varchar (8)	Y					Attribute
3	Author	Yes/No					Yes/No	Attribute
4	Log	Yes/No					Yes/No	Attribute

Table A-7 Match Table

No.	Field Name	Field Type	Index	Unique	Nullable	Foreign Key	Check	Key Type
1	JobID	integer	Y			Many		Foreign Key
2	KgNo	integer	Y				1-5	Foreign Key
3	RawID	integer	Y					Foreign Key
4	Run	integer						Attribute
5	Complete	Yes/No					Yes/No	Attribute

Table A-8 Order Table

No.	Field Name	Field Type	Index	Unique	Nullable	Foreign Key	Check	Key Type
1	OrderID	integer	Y	Y		Job		Primary Key
2	CustomerID	integer	Y					Foreign Key
3	CreDit	Option			Y		7days,15days	Attribute
4	Total	Currency						Attribute
5	Vat	Currency						Attribute
6	Net	Currency						Attribute
7	OrderDate	Date	Y				Dd/mm/yy	Attribute
8	Complete	Yes/No					Yes/No	Attribute
9	Delete	Yes/No					Yes/No	Attribute
10	Delete Date	Date	Y				Dd/mm/yy	Attribute
11	User	Varchar(8)						Attribute
12	User Delete	Varchar(8)						Attribute

Table A-9 Order Change Table

No.	Field Name	Field Type	Index	Unique	Nullable	Foreign Key	Check	Key Type
1	ID	integer	Y	Y				Primary Key
2	OrderID	integer	Y					Foreign Key
3	Total	Currency						Attribute
4	Vat	Currency						Attribute
5	Net	Currency						Attribute
6	Edit Date	Date	Y				Dd/mm/yy	Attribute
7	User	Varchar(8)						Attribute

Table A-10 Product Table

No.	Field Name	Field Type	Index	Unique	Nullable	Foreign Key	Check	Key Type
1	ProductID	varchar (14)	Y	Y		Job		Primary Key
2	Grade1	varchar (1)	Y		Y		A,I,K,M	Foreign Key
3	Gram1	Varchar(3)			Y		107,125 etc.	Attribute
4	Grade2	varchar (1)	Y		Y		A,I,K,M	Foreign Key
5	Gram2	Varchar(3)			Y		107,125 etc.	Attribute
6	Grade3	varchar (1)	Y		Y		A,I,K,M	Foreign Key
7	Gram3	Varchar(3)			Y		107,125 etc.	Attribute
8	Grade4	varchar (1)	Y		Y		A,I,K,M	Foreign Key
9	Gram4	Varchar(3)			Y		107,125 etc.	Attribute
10	Grade5	varchar (1)	Y		Y		A,I,K,M	Foreign Key
11	Gram5	Varchar(3)			Y		107,125 etc.	Attribute
12	Width	int(2)					Even 36 to 70	Attribute
13	Length	Int(2)						Attribute
14	Quantity	int			Y			Attribute
15	UnitPrice	single						Attribute

Table A-11 Product Change Table

No.	Field Name	Field Type	Index	Unique	Nullable	Foreign Key	Check	Key Type
1	ID	int	Y	Y				Primary Key
2	ProductID	varchar (14)	Y				A,I,K,M	Foreign Key
3	From	int			Y			Attribute
4	To	int			Y			Attribute
5	User	Varchar(8)						Attribute
6	Edit Date	Date	Y				Dd/mm/yy	Attribute

Table A-12 Raw Material Table

No.	Field Name	Field Type	Index	Unique	Nullable	Foreign Key	Check	Key Type
1	RawID	int	Y	Y		Job		Primary Key
2	Grade	varchar (1)	Y				A,I,K,M	Foreign Key
3	Gram	Varchar(3)			Y		107,125 etc.	Attribute
4	Width	int(2)					Even 36 to 70	Attribute
5	Weight	int						Attribute
6	SupplierID	int	Y					Foreign Key
7	Cost	single						Attribute
8	TotalCost	double						Attribute
9	Installdate	date					Dd/mm/yy	Attribute
10	Weight In	int						Attribute
11	PO No.	Varchar(6)	Y					Attribute
12	Rqt ID.	int	y	y				Foreign Key
13	Select	Yes/No					Yes/No	Attribute
14	User	Varchar(8)						Attribute

Table A-13 Raw Material Change Table

No.	Field Name	Field Type	Index	Unique	Nullable	Foreign Key	Check	Key Type
1	ID	int	Y	Y				Primary Key
2	RawID	int	Y					Foreign Key
3	SupplierID	int	Y					Foreign Key
4	Cost	single						Attribute
5	TotalCost	double						Attribute
6	Weight	int						Attribute
7	PO No.	Varchar(6)	Y					Attribute
8	User	Varchar(8)						Attribute
9	Edit Date	Date	Y				Dd/mm/yy	Attribute

Table A-14 Request Order Table

No.	Field Name	Field Type	Index	Unique	Nullable	Foreign Key	Check	Key Type
1	Rqt. ID.	int	Y	Y		Raw mat.		Primary Key
2	Grade	varchar(1)	Y			*	A,I,K,M	Foreign Key
3	Gram	Varchar(3)			Y		107,125 etc.	Attribute
4	Width	int(2)					Even 36 to 70	Attribute
5	Weight	int						Attribute
6	Rqt. Date	Date	Y				Dd/mm/yy	Attribute
7	OnHand	Yes/No					Yes/No	Attribute
8	User	Varchar(8)						Attribute

Table A-15 Schedule Table

No.	Field Name	Field Type	Index	Unique	Nullable	Foreign Key	Check	Key Type
1	ScheduleID	varchar (10)	Y	Y		ProSchDetail		Primary Key
2	TotalRun	int					Meters	Attribute
3	Schedule Date	Date	Y				Dd/mm/yy	Attribute
4	Complete	Yes/No					Yes/No	Attribute
5	Work	Yes/No					Yes/No	Attribute

Table A-16 Schedule Detail (ProSchDetail)Table

No.	Field Name	Field Type	Index	Unique	Nullable	Foreign Key	Check	Key Type
1	ScheduleID	varchar (10)	Y	Y				Foreign Key
2	JobID	varchar (10)	Y					Foreign Key

Table A-17 Supplier Table

No.	Field Name	Field Type	Index	Unique	Nullable	Foreign Key	Check	Key Type
1	SupplierID	int	Y	Y		Raw, Cost		Primary Key
2	Company	varchar (50)	Y					Attribute
3	Address	varchar (80)						Attribute
4	Telephone	int (9)					<area code, 7 digits>	Attribute
5	Fax	int (9)					<area code, 7 digits>	Attribute
6	ContactPerson	varchar (50)						Attribute
7	CostA	single						Attribute
8	CostI	single						Attribute
9	CostK	single						Attribute
10	CostM	single						Attribute

Table A-18 Supplier Table

No.	Field Name	Field Type	Index	Unique	Nullable	Foreign Key	Check	Key Type
1	ID.	int						
2	Supplier ID.	int	Y					Foreign Key
3	Company	varchar (50)	Y					Attribute
4	Address	varchar (80)						Attribute
5	Telephone	int (9)					<area code, 7 digits>	Attribute
6	Fax	int (9)					<area code, 7 digits>	Attribute
7	ContactPerson	varchar (50)						Attribute
8	CostA	single						Attribute
9	CostI	single						Attribute
10	CostK	single						Attribute
11	CostM	single						Attribute
12	User	Varchar(8)						Attribute
13	Edit Date	Date	Y				Dd/mm/yy	Attribute



APPENDIX B
INTERFACE DESIGN

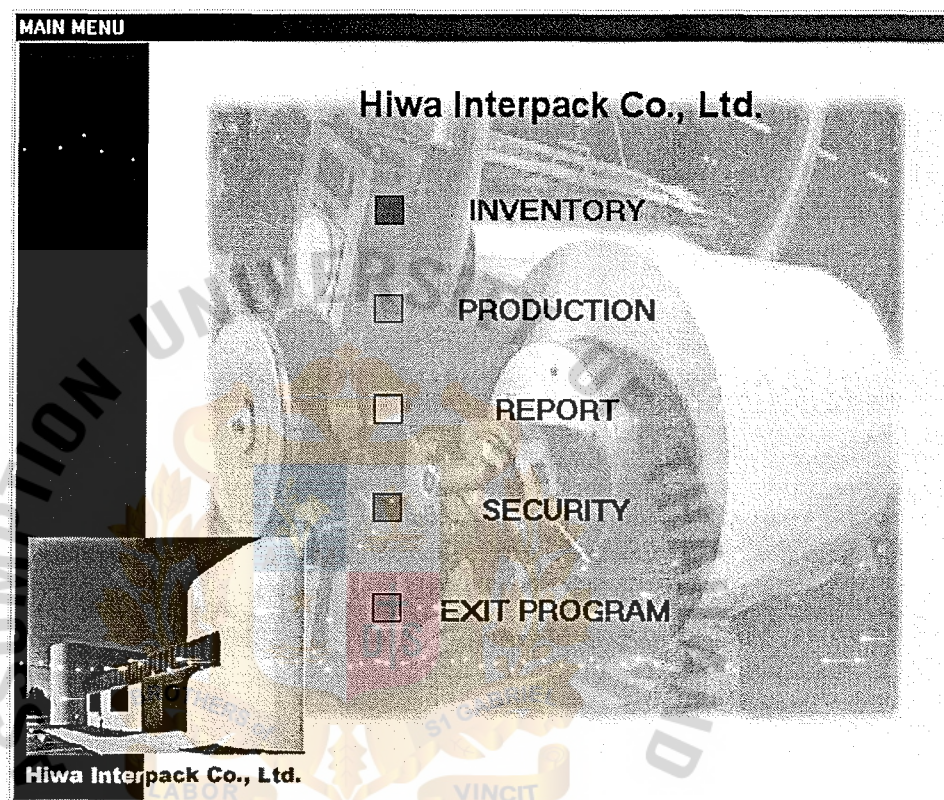


Figure B-1 Main Menu Form

INVENTORY MENU

INVENTORY

CUSTOMER MENU

ADD

EDIT

RAW MATERIAL MENU

Craft Paper

Supplier

ADD

EDIT

CHECK

ADD

EDIT

SET COST

PRODUCT MENU

CHECK

EDIT

ORDER MENU

ADD

EDIT

MAIN MENU

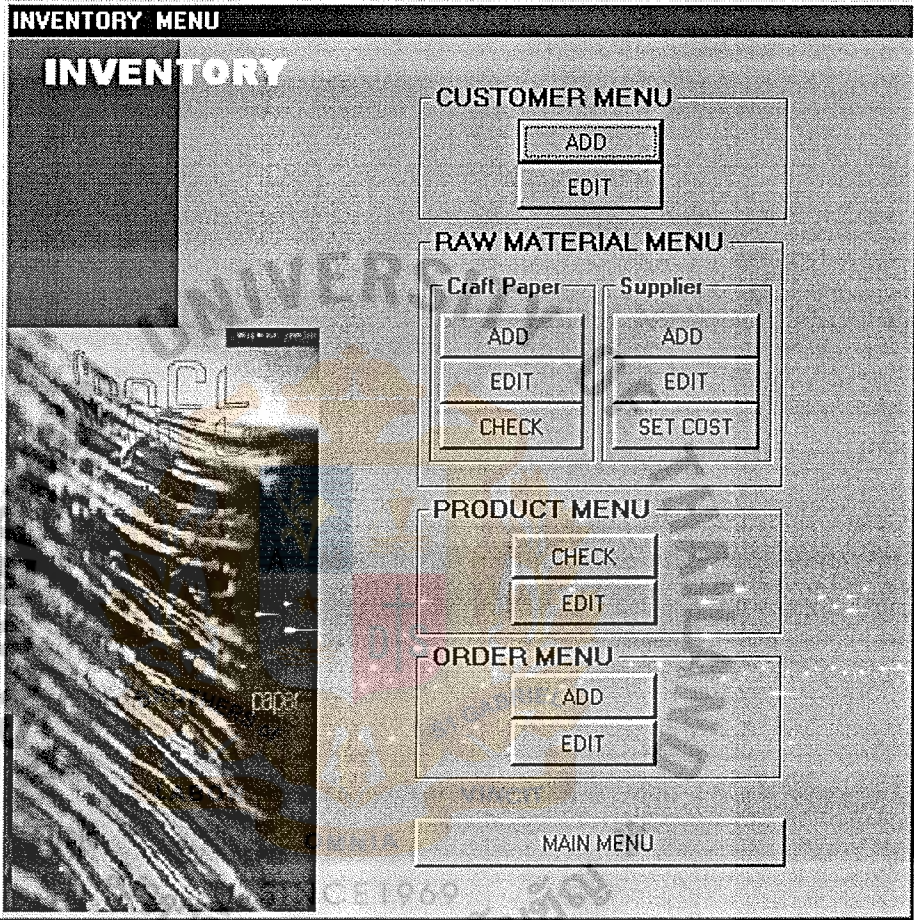


Figure B-2 Inventory Menu Form

ADD NEW CUSTOMER

Customer Information

Customer ID:	Auto Selling
Company Name :	<input type="text"/>
Address :	<input type="text"/>
Telephone No. :	<input type="text"/>
FAX :	<input type="text"/>
Contact Person :	<input type="text"/>
Bad List :	<input type="radio"/> Yes <input type="radio"/> No
Credit Type :	Pay on Purchase ▼

* มหาวิทยาลัยอัสสัมชัญ *

Figure B-3 Add new Customer Form

EDIT CUSTOMER RECORD

Cus. ID	Company	Address	Telephone No.	Fax	Contact Person	Bad Credit	Credit Type
▶ 1	MaMa Ltd.	23 Pechburee Rd. Pratoor	022347676	022667567	Mr. Satang J.	No	7days
2	Profect Com Ltd.	21 Jangwatana Bangpud	025032751	029840619	Mr. Aim S.	No	7days
3	Siamspout Syndicate	44 Ladpao Rd. Soi 48 La	027652345	027658976	Mr. BoRi Bhoo	Yes	Pay on Purchase
4	Sony Co. Ltd.	33 Software Park Janwatt	029877656	023443546	Mr. Dhitsapong L.	No	15days
5	Yahoo	Yahoo Queen New York U	025678654	023458769	Mr. Falco D.	No	Pay on Purchase
6	LG Co.	12 LG Building Selom Ban	024766767	028765412	Mr. Haan Yong Juk	No	7days
7	Narong Co.	28 huahin Chonburee 122	026376444	026334535	Mr. Rangtong K.	No	15days
8	Loal Doctor Ltd.	29/155 Muanglongtanee	025032752	029840619	Mr. Atip S.	No	15days

Back to Main Menu

Figure B-4 Edit Customer Record Form

CHECK RAW MATERIAL ON HAND

Raw Mat.ID	Grade	Gram	Width	Weight	Sup. ID	Supplier Company	Cost/Kg	Weight Instal	Total cost Instal	Instal Date	PO No.
1	A	107	36	550	1	Paper Ltd.	\$22.15	550	\$12,182.50	25-Nov-02	000001
2	A	107	36	450	1	Paper Ltd.	\$22.15	450	\$9,967.50	25-Nov-02	000001
4	M	125	36	1018	2	Tar Plak Co. Ltd.	\$14.00	1200	\$16,800.00	25-Nov-02	000002
5	M	125	36	963	2	Tar Plak Co. Ltd.	\$14.00	1000	\$14,000.00	25-Nov-02	000002
6	SW	150	36	62	4	Westley Co.	\$28.88	500	\$14,440.00	25-Nov-02	000003
7	SW	185	40	700	4	Westley Co.	\$28.88	700	\$20,216.00	25-Nov-02	000003
8	SW	150	44	1000	4	Westley Co.	\$28.88	1000	\$28,880.00	25-Nov-02	000003
9	SW	150	36	750	4	Westley Co.	\$28.88	750	\$21,660.00	25-Nov-02	000003
10	A	107	36	1200	3	PPP&P Co.	\$22.13	1200	\$26,556.00	25-Nov-02	000004
11	A	107	44	50	3	PPP&P Co.	\$22.13	500	\$11,065.00	25-Nov-02	000004
12	A	107	44	500	3	PPP&P Co.	\$22.13	500	\$11,065.00	25-Nov-02	000004
13	A	107	44	700	3	PPP&P Co.	\$22.13	700	\$15,491.00	25-Nov-02	000004
14	A	107	36	600	3	PPP&P Co.	\$22.13	600	\$13,278.00	25-Nov-02	000004
15	I	185	42	720	2	Tar Plak Co. Ltd.	\$19.00	720	\$13,680.00	25-Nov-02	000005
16	I	150	48	800	2	Tar Plak Co. Ltd.	\$19.00	800	\$15,200.00	25-Nov-02	000005
17	M	125	40	865	2	Tar Plak Co. Ltd.	\$14.05	1000	\$14,050.00	25-Nov-02	000005
18	M	125	44	120	2	Tar Plak Co. Ltd.	\$14.05	660	\$9,273.00	26-Nov-02	000005
19	M	107	44	500	1	Paper Ltd.	\$13.98	500	\$6,990.00	26-Nov-02	000006
20	M	107	44	480	1	Paper Ltd.	\$13.98	480	\$6,710.40	26-Nov-02	000006
21	I	107	44	50	3	PPP&P Co.	\$18.95	500	\$9,475.00	26-Nov-02	000007
22	I	107	44	600	3	PPP&P Co.	\$18.98	600	\$11,388.00	26-Nov-02	000007
23	A	107	44	500	4	Westley Co.	\$21.55	500	\$10,775.00	26-Nov-02	000008
24	A	125	44	216	4	Westley Co.	\$21.55	300	\$6,465.00	26-Nov-02	000008
25	A	125	44	88	4	Westley Co.	\$21.55	530	\$11,421.50	26-Nov-02	000008
27	I	107	40	413	6	Kolla Co.	\$14.15	490	\$6,933.50	26-Nov-02	000010

Searching for Raw material

Grade: A

Gram: 107

Width: 88

Search

View All

Back to Main Menu

Figure B-5 Check Raw Material On hand Form

ADD NEW RAW MATERIAL

Select Request

From Request No.

OkCancel

Request Order on Waiting List						
Request ID	Grade	Gram	Width	Weight	Made Request on	On Wait
44	A	107	50	450	29-Nov-02	Yes
45	A	107	50	480	29-Nov-02	Yes
46	M	125	44	600	29-Nov-02	Yes
47	I	185	36	700	29-Nov-02	Yes

Figure B-6 Add Raw Material Form

EDIT RAW MATERIAL RECORD

Raw Mat ID	Grade	Gram	Width	Weight	Sup. ID	Supplier Company	Cost/Kg	Weight Install	Total cost Install	Install Date	PO No
1	A	107	36	550	1	Paper Ltd.	฿22.15	550	฿12,182.50	25-Nov-02	000001
2	A	107	36	450	1	Paper Ltd.	฿22.15	450	฿9,967.50	25-Nov-02	000001
3	M	125	36	0	2	Tar Plak Co. Ltd.	฿14.00	670	฿9,380.00	25-Nov-02	000002
4	M	125	36	1018	2	Tar Plak Co. Ltd.	฿14.00	1200	฿16,800.00	25-Nov-02	000002
5	M	125	36	963	2	Tar Plak Co. Ltd.	฿14.00	1000	฿14,000.00	25-Nov-02	000002
6	SW	150	36	62	4	Westley Co.	฿28.88	500	฿14,440.00	25-Nov-02	000003
7	SW	185	40	700	4	Westley Co.	฿28.88	700	฿20,216.00	25-Nov-02	000003
8	SW	150	44	1000	4	Westley Co.	฿28.88	1000	฿28,880.00	25-Nov-02	000003
9	SW	150	36	750	4	Westley Co.	฿28.88	750	฿21,660.00	25-Nov-02	000003
10	A	107	36	1200	3	PPP&P Co.	฿22.13	1200	฿26,556.00	25-Nov-02	000004
11	A	107	44	50	3	PPP&P Co.	฿22.13	500	฿11,065.00	25-Nov-02	000004
12	A	107	44	500	3	PPP&P Co.	฿22.13	500	฿11,065.00	25-Nov-02	000004
13	A	107	44	700	3	PPP&P Co.	฿22.13	700	฿15,491.00	25-Nov-02	000004
14	A	107	36	600	3	PPP&P Co.	฿22.13	600	฿13,278.00	25-Nov-02	000004
15	I	185	42	720	2	Tar Plak Co. Ltd.	฿19.00	720	฿13,680.00	25-Nov-02	000005
16	I	150	48	800	2	Tar Plak Co. Ltd.	฿19.00	800	฿15,200.00	25-Nov-02	000005
17	M	125	40	865	2	Tar Plak Co. Ltd.	฿14.05	1000	฿14,050.00	25-Nov-02	000005
18	M	125	44	120	2	Tar Plak Co. Ltd.	฿14.05	660	฿9,273.00	26-Nov-02	000005
19	M	107	44	500	1	Paper Ltd.	฿13.98	500	฿6,990.00	26-Nov-02	000006
20	M	107	44	480	1	Paper Ltd.	฿13.98	480	฿6,710.40	26-Nov-02	000006
21	I	107	44	50	3	PPP&P Co.	฿18.95	500	฿9,475.00	26-Nov-02	000007
22	I	107	44	600	3	PPP&P Co.	฿18.98	600	฿11,388.00	26-Nov-02	000007
23	A	107	44	500	4	Westley Co.	฿21.55	500	฿10,775.00	26-Nov-02	000008
24	A	125	44	216	4	Westley Co.	฿21.55	300	฿6,465.00	26-Nov-02	000008
25	A	125	44	88	4	Westley Co.	฿21.55	530	฿11,421.50	26-Nov-02	000008

Searching for Raw material

Raw Material ID:

Search

Back to Main Menu

Figure B-7. Edit Raw Material Record Form

ADD NEW SUPPLIER

Supplier Editor

Company Name :	<input type="text"/>
Address :	<input type="text"/>
Telephone No. :	<input type="text"/>
FAX No. :	<input type="text"/>
Contact Person :	<input type="text"/>
Cost of SW :	<input type="text"/>
Cost of A :	<input type="text"/>
Cost of I :	<input type="text"/>
Cost of M :	<input type="text"/>

Figure B-8 Add Supplier Form

EDIT SUPPLIER RECORD

Sup. ID	Company	Address	Telephone No.	Fax	Contact Person
1	Paper Ltd.	123 Soi Lalaiysup Seelom Ba	026678989	023455656	Mr. Weera H.
2	Tar Plak Co. Ltd.	56 Bahn Bangkuwad Pratum	029765149	029865149	Mr. Supap Buaprang
3	PPP&P Co.	Sun Tower Jangwattana Bar	027683465	029556722	Ms. Jieng Ji Huan
4	Westley Co.	26 Pra RAMA9 Rd. Huamark	024327687	023156786	Mrs. Sunee K.
5	UBC Paper Co. Ltd.	UBC Tower Vipawadeerung	022717171	022717172	Mr. Korakoch J.
6	Kolla Co.	12/312 Hanfa Bangkok 1112	025021365	027655958	Ms. Lanna K.
7	Saunshee Ltd.	146 Bangkuwad BangHoo P	029873465	029987879	Mrs. Somyoch L.
8	Thai Balm Co.	24 Surawong Village Chok C	023914566	029987644	Mrs. Sopin S.
9	Thai Cart Co.	46 Sahnainoi Sunsai Chiang	053491206	053765543	Mr. Narong S.

Back to Main Menu

Figure B-9 Edit Supplier Record Form

SETTING CURRENT RATE

	Grade	Supplier ID	Supplier Company	Telephone	Fax	Contact Person	Cost/kg	Price/kg
▶	A	4	Westley Co.	024327687	023156786	Mrs. Sunee K.	\$20.22	\$22.24
	I	9	Thai Cart Co.	053491206	053765543	Mr. Narong S.	\$18.22	\$20.04
	M	8	Thai Balm Co.	023914566	029987644	Mrs. Sopin S.	\$13.35	\$14.69
	SW	9	Thai Cart Co.	053491206	053765543	Mr. Narong S.	\$27.99	\$30.79

Back to Main Menu

Figure B-10 Set Cost&price Form

CHECK & ADD PRODUCT

Product ID	Grade1	Gram1	Grade2	Gram2	Grade3	Gram3	Grade4	Gram4	Grade5	Gram5	Width	Length	Quantity	Price/Unit
▶ A1M211M2A24450	A	107	M	125	I	107	M	125	A	125	44	50	0	\$18.45
I1M211N0N04048	I	107	M	125	I	107					40	48	0	\$8.73
S3M2N0N0N03638	SW	150	M	125							36	38	10	\$6.51
S4M21M2S43638	SW	185	M	125	I	107	M	125	SW	185	36	38	0	\$16.98
I1M2N0N0N05053	I	107	M	125							50	53	0	\$8.38
A1A1A1A1A13638	A	107	A	107	A	107	A	107	A	107	36	38	15	\$12.82
A1M2M2M2A15054	A	107	M	125	M	125	M	125	A	107	50	54	0	\$21.41
A1M214M2A15255	A	107	M	125	I	185	M	125	A	107	52	55	0	\$26.13
S2M2S2N0N04044	SW	125	M	125	SW	125					40	44	0	\$11.87
A4M2A4N0N04848	A	185	M	125	A	185					48	48	0	\$16.33
S1M2N0N0N03839	SW	107	M	125							38	39	0	\$5.78
S2M2A1M2S26065	SW	125	M	125	A	107	M	125	SW	125	60	65	50	\$39.69

Searching for Product

Product ID:

Search

View All

Back to Main Menu

Figure B-11 Check Product Form

EDIT PRODUCT STOCK

PID	Grade1	Gram1	Grade2	Gram2	Grade3	Gram3	Grade4	Gram4	Grade5	Gram5	Width	Length	Quantity	Price/unit
A1M211M2A24450	A	107	M	125	I	107	M	125	A	125	44	50	0	\$18.45
I1M211N0N04048	I	107	M	125	I	107					40	48	0	\$8.73
S3M2N0N0N03638	SW	150	M	125							36	38	10	\$6.51
S4M21M2S43638	SW	185	M	125	I	107	M	125	SW	185	36	38	0	\$16.98
I1M2N0N0N05053	I	107	M	125							50	53	0	\$8.38
A1A1A1A1A13638	A	107	A	107	A	107	A	107	A	107	36	38	15	\$12.82
A1M2M2M2A15054	A	107	M	125	M	125	M	125	A	107	50	54	0	\$21.41
A1M214M2A15255	A	107	M	125	I	185	M	125	A	107	52	55	0	\$26.13
S2M2S2N0N04044	SW	125	M	125	SW	125					40	44	0	\$11.87
A4M2A4N0N04848	A	185	M	125	A	185					48	48	0	\$16.33
S1M2N0N0N03839	SW	107	M	125							38	39	0	\$5.78
S2M2A1M2S26065	SW	125	M	125	A	107	M	125	SW	125	60	65	50	\$39.69

Searching for Product

Product ID:

Search

View All

Back to Main Menu

Figure B-12 Update Stock Form

ADD NEW CUSTOMER ORDER

Order Information

Customer

Narong Co.

28 huahin Chonburee 12228

Tel : 026376444

Fax : 026334535

Order ID.

15

Order Date

29 Nov-02

Credit Type :

15days

ADD JOB

RET SALE

Job ID	Product ID	Asking Price	Quantity Order	Due Date

Total cost :

BAHT

Vat(7%) :

BAHT

Net Sale :

BAHT

ADD ORDER

CANCEL

Figure B-13 Add Order Form

EDIT ORDER

Order ID	Order By	Credit Type	Total	Var	Net Sale	Order Date	Add by
4		7days	\$22,626.40	\$1,593.05	\$24,210.25	26-Nov-02	onghunt
5		15days	\$20,550.00	\$1,438.50	\$21,988.50	26-Nov-02	onghunt
6		7days	\$17,040.00	\$1,192.80	\$18,232.80	26-Nov-02	namotasa
7		Pay on Purchas	\$16,675.00	\$1,167.25	\$17,842.25	29-Nov-02	onghunt
8		Pay on Purchas	\$17,335.00	\$1,217.65	\$18,612.65	29-Nov-02	onghunt
9		15days	\$17,430.00	\$1,220.10	\$18,650.10	29-Nov-02	onghunt
10		7days	\$22,000.00	\$1,540.00	\$23,540.00	29-Nov-02	onghunt
11		15days	\$3,600.00	\$252.00	\$3,852.00	29-Nov-02	onghunt
12		Pay on Purchas	\$7,200.00	\$504.00	\$7,704.00	29-Nov-02	onghunt
14		15days	\$11,785.00	\$824.95	\$12,609.95	29-Nov-02	onghunt

Back to Main Menu

Figure B-14 Edit Order Form

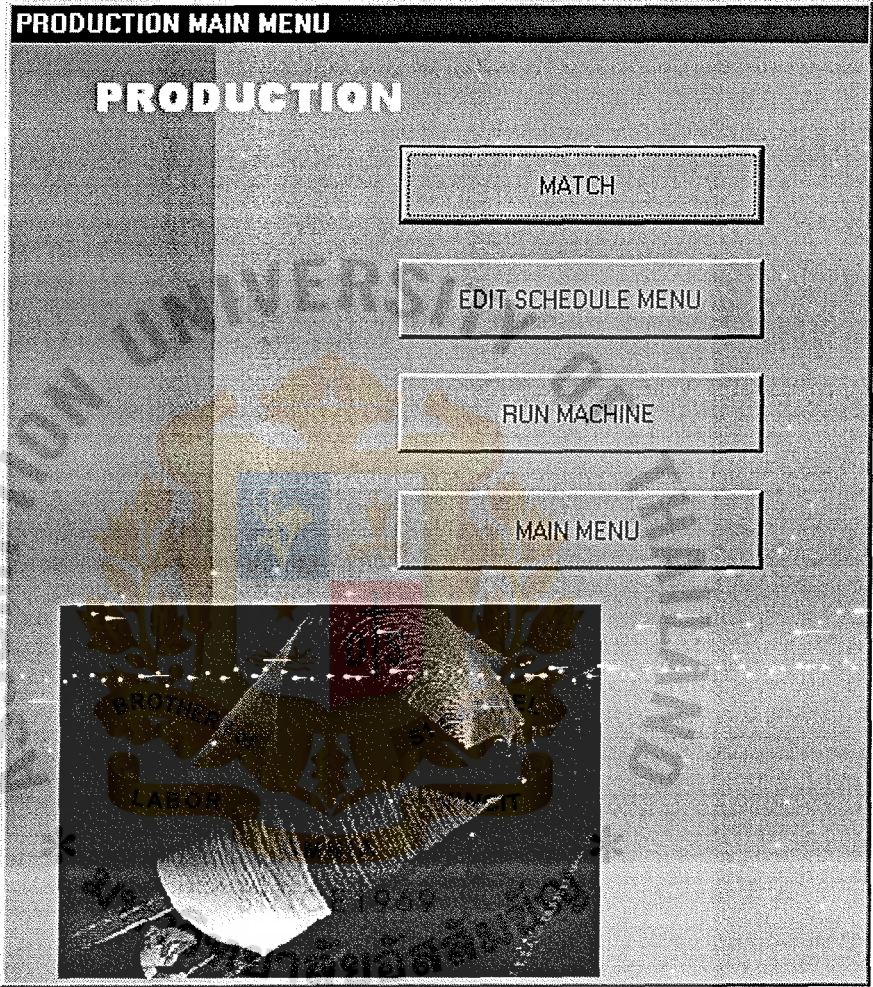


Figure B-15 Production Menu Form

EDIT SCHEDULE

Unplan Job

Job ID	Order ID	Product ID	Machine Run	Due Date
▶ 19	11	11M21N0N04048	488	04-Dec-02
16	9	S4M21M2S43638	193	04-Dec-02

Schedule Detail

Schedule ID : 2

Total Machine Run : 332

Job ID	Order ID	Product ID	Machine Run	Due Date
▶ 13	7	A1M21M2A24450	572	02-Dec-02
10	6	S3M2N0N0N03638	579	02-Dec-02
9	5	A1M21M2A24450	1245	02-Dec-02
12	7	S3M2N0N0N03638	936	03-Dec-02

Job ID :

UPDATE

CANCEL

Figure B-17 Matching Form

Schedule ID : 2

Total Machine Run : 3332

Current Machine Run : 0

Job Check Point :

Machine Speed : Up 1 Down

Job List

Job ID	Product ID	Quantity	Machine Run	Due Date
13	AIM21M2A24450	450	572	2 Dec 02
10	S3M2NONON03638	600	579	2 Dec 02
9	AIM21M2A24450	980	1245	2 Dec 02
12	S3M2NONON03638	970	936	3 Dec 02

Machine1

Machine1

1st		
Job ID	Raw Mat. ID	Machine Run

Current Machine Run :
Raw Mat. Check Point :

Machine2

Machine2

2nd		
Job ID	Raw Mat. ID	Machine Run

Current Machine Run :
Raw Mat. Check Point :

4th		
Job ID	Raw Mat. ID	Machine Run

Current Machine Run :
Raw Mat. Check Point :

Machine3

Machine3

3rd		
Job ID	Raw Mat. ID	Machine Run

Current Machine Run :
Raw Mat. Check Point :

5th		
Job ID	Raw Mat. ID	Machine Run

Current Machine Run :
Raw Mat. Check Point :

START

Back to Main Menu

มหาวิทยาลัยอัสสัมชัญ
SINCE 1969

Figure B-18 Machine Form

74

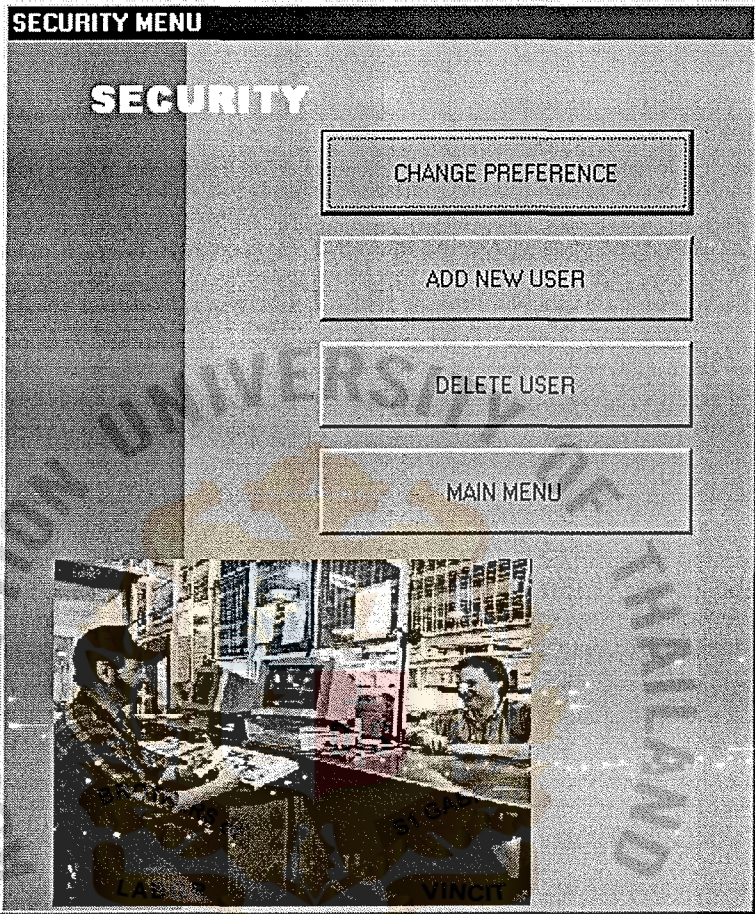


Figure B-19 Security Menu Form

ADD USER

User Name	Password	Authority	LogIn
onghunt	onghunt	Yes	Yes
namotasa	pakawato	No	No

ADD AUTHORITY USER

ADD REGULAR USER

Back to Main Menu

Figure B-20 Add User Form

CHANGE PREFERENCE

Preference

USER NAME :

onghunt

PASSWORD :

PASSWORD(again) :

SUBMIT

CANCEL

Figure B-21 Change Preference Form

DELETE USER

	User Name	Password	Authority	Login
	onghunt	onghunt	Yes	Yes
▶	namotasa	pakawato	No	No

Delete

USER :

DELETE

CANCEL

Back to Main Menu

Figure B-22 Delete User Form

REPORT MENU

REPORT

Order Report

Customer Order

ORDER ADDORDER CHANGEORDER DELETE

Customer Record

RECORD CHANGEORDER HISTORY

Raw Material Report

Request Order

REQUESTWAIT LIST

Craft Paper

CRAFT ADDCHANGE

Supplier

RECORD CHANGECOST CHANGE

Product Report

RECORD CHANGE

Job Report

COMPLETED JOB

MAIN MENU




Figure B-23 Report Menu Form

REPORT ORDER ADD IN REPORT

Range of Date

From : 29-Nov-02 SET

To : 29-Nov-02 SET

View Repot Back to Report Menu

Figure B-24 Customer Order report Form

ORDER CHANGE REPORT

Range of Date

From : 29-Nov-02 SET

To : 29-Nov-02 SET

View Report Back to Report Menu

Figure B-25 Order Change Report Form

ORDER DELETE REPORT

Range of Date

From :

29-Nov-02

SET

To :

29-Nov-02

SET

View Repot

Back to Report Menu

Figure B-26 Order Deleted Report Form

CHANGE ON CUSTOMER REPORT

Select Customer Name

Company Name :

Figure B-27 Customer Change Report Form

CUSTOMER TRANSACTION RECORD REPORT

Select Customer Name

Company Name :

Figure B-28 Customer Transaction history report Form

REQUEST ORDER REPORT

Range of Date

From :	<input type="text" value="29-Nov-02"/>	<input type="button" value="SET"/>
To :	<input type="text" value="29-Nov-02"/>	<input type="button" value="SET"/>

Figure B-29 Request order report from Form

CRAFT PAPER ADD IN REPORT

Report by
☒ Date ☐ PO No.

Range of Date

From : 29-Nov-02 SET

To : 29-Nov-02 SET

View Report Back to Report Menu

* Figure B-30 Raw material installed report Form *
มหาวิทยาลัยอัสสัมชัญ
SINCE 1969

RAW MATERIAL CHANGE BY USER REORT

Select Raw Material ID.

Raw Material ID. :

Figure B-31 Raw material Change Report Form

SUPPLIER RECORD CHANGE REPORT

Select Supplier

Company Name :

Figure B-32 Supplier change report Form

COST CHANGE REPORT

SelectGrade

Grade :

A
I
M
SW

View Repot Back to Report Menu

Figure B-33 Cost Change report Form

CHANGE BY USER ON PRODUCT STOCK REPORT

Select Product

Product ID. :

View Repot Back to Report Menu

Figure B-34 Product change report Form



APPENDIX C
REPORT DESIGN

Hiwa Interpack Co., Ltd.

CUSTOMER ORDER REPORT

FROM

25 November 2002

TO

29 November 2002

Order ID : 3 Order Date : 25/Nov/02
Customer ID : 3 Company : SiamSport Syndicate Ltd.
Credit : 15days
Total Cost : 16200 Baht
VAT (7%) : 1134 Baht
Net Sale : 17334 Baht
Add by : onghunt

Figure C-1 Customer Order Report

3 of 2

Hiwa Interpack Co., Ltd.

ORDER CHANGED REPORT

ON 29 November 2002

2 of 2

Order ID : 12

Edit Date : 29/Nov/02

Total Cost(Decrease) : 9300

Baht

VAT (7%)(Decrease): 651

Baht

Net Sale (Decrease) : 9951

Baht

Add by : ong hunt

Total Net Sale(Decrease) : 9951 Baht

Figure C-2 Order Change Report

Hiwa Interpack Co., Ltd.

ORDER DELETED REPORT

ON 29 November 2002

2 of 2

Order ID :	Total Cost :	VAT (7%) :	Net Sale :	Delete Date :	Delete By :
	Baht	Baht	Baht		
13	10625	743.75	11368.75	29/Nov/02	onghunt
Total Net Sale :			11368.75	Baht	

SINCE 1969

Figure C-3 Order Deleted Report

Hiwa Interpack Co., Ltd.

CHANGE ON CUSTOMER REPORT

On MaMa Ltd.

2 of 2

Edit Date : 24/Nov/02 **Edit by :** atips
Company : MaMa Ltd.
Address : 23 Pechburee Rd. Pratoonaam Bangkok 11350
Telephone No. : 022347676
FAX No. : 022667567
Contact Person : Mr. Sutee
Bad Credit : No **Credit Type :** 15days

Figure C-4 Customer Change Report

Hiwa Interpack Co., Ltd.

TRANSACTION HISTORY
REPORT

On Yahoo

Order ID :	Total Cost :	VAT (7%):	Net Sale :	Order Date :	Add By :
	Baht	Baht	Baht		
6	17040	1192.8	18232.8	26/Nov/02	namotasa
8	17395	1217.65	18612.65	29/Nov/02	onghunt
12	7200	504	7704	29/Nov/02	onghunt
Total Net Sale :			44549.45	Baht	

Figure C-5 Customer Transaction Report

Hiwa Interpack Co., Ltd.

REQUEST ORDER REPORT

ON 29 November 2002

2 of 2

Request No	Grade	Gram	Width	Weight	Request Date	Request by
43	I	107	36	380	29/Nov/02	onghunt
44	A	107	50	450	29/Nov/02	onghunt
45	A	107	50	480	29/Nov/02	onghunt
46	M	125	44	600	29/Nov/02	onghunt
47	I	185	36	700	29/Nov/02	onghunt

Figure C-6 Request order Report

Hiwa Interpack Co., Ltd.

REQUEST ORDER WAITING LIST

Request No	Grade	Gram	Width	Weight	Request Date	Request by
44	A	107	50	450	29/Nov/02	onghunt
45	A	107	50	480	29/Nov/02	onghunt
46	M	125	44	600	29/Nov/02	onghunt
47	I	185	36	700	29/Nov/02	onghunt

Figure C-7 Request order Waiting list Report

Hiwa Interpack Co., Ltd.

CRAFT PAPER ADD IN REPORT

FROM
26 November 2002

TO
29 November 2002

Raw Mat. ID.	Grade	Gram	Width	Weight Install	Total Cost	Supplier	Install Date	Add by
18	M	125	44	660	9273	Tar Plak Co. Ltd.	26-Nov-02	namotasa
19	M	107	44	500	6990	Paper Ltd.	26-Nov-02	namotasa
20	M	107	44	480	6710.4	Paper Ltd.	26-Nov-02	namotasa
21	I	107	44	500	9475	PPP&P Co.	26-Nov-02	namotasa
22	I	107	44	600	11388	PPP&P Co.	26-Nov-02	namotasa
23	A	107	44	500	10775	Westley Co.	26-Nov-02	namotasa
24	A	125	44	300	6465	Westley Co.	26-Nov-02	namotasa
25	A	125	44	530	11421.5	Westley Co.	26-Nov-02	namotasa
26	M	125	44	700	9506	UBC Paper Co. Ltd.	26-Nov-02	onghunt
27	I	107	40	490	6933.5	Kolla Co.	26-Nov-02	onghunt

Figure C-8 Raw material Report

Hiwa Interpack Co., Ltd.

RAWMATERIAL CHANGED REPORT

On Raw Material ID. 2

Raw Mat. ID.	Weight	Supplier	Total Cost	Edit Date	Change by
2	450	Paper Ltd.	9954	25-Nov-02	atips

Figure C-9 Raw Material Change Report

Hiwa Interpack Co., Ltd.

CHANGE ON SUPPLIER
REPORT

On Paper Ltd.

Edit Date : 24/Nov/02 Edit by : alips
Company : Paper Ltd.
Address : 123 Soi Lalaiysup Seelom Bangkok 12050
Telephone No. : 026678989
FAX No. : 023455656
Contact Person : Mr. Weera H.

Cost of Craft Paper

SW	A	I	M
28.8	21.85	19.45	13.95

Figure C-10 Supplier Change Report

Hiwa Interpack Co., Ltd.

COST CHANGE REPORT

On Cost of Grade SW

2 of 2

Supplier	Cost From Supplier/Kg	Cost Charge Customer/Kg	Supplier	Editt Date	Change by
Paper Ltd.	29	31.9	Paper Ltd.	24-Nov-02	atips
PPP&P Co.	28.35	31.185	PPP&P Co.	24-Nov-02	atips
Tar Plak Co.	28.5	31.35	Tar Plak Co.	24-Nov-02	atips
PPP&P Co.	28.35	31.185	PPP&P Co.	26-Nov-02	onghunt
Tar Plak Co.	28.5	31.35	Tar Plak Co.	26-Nov-02	onghunt
PPP&P Co.	28.35	31.185	PPP&P Co.	28-Nov-02	onghunt
Tar Plak Co.	28.5	31.35	Tar Plak Co.	28-Nov-02	onghunt
UBC Paper Co.	28.82	31.702	UBC Paper	29-Nov-02	onghunt

Figure C-11 Cost Change Report

Hiwa Interpack Co., Ltd.

CHANGE ON PRODUCT
REPORT

On A1M2M2M2A15054

Editt Date

28-Nov-02

From

0

To

2

Changed by

onghunt

Figure C-12 Product change Report

Hiwa Interpack Co., Ltd.

JOB COMPLETED

ON

29 November 2002

Job ID.	Order ID.	Product ID.	Asking Price	Quantity Order
2	1	S3M2N0N0N03638	7	150
4	3	S3M2N0N0N03638	6.7	1000
5	3	A1M2I1M2A24450	19	500
6	4	A1M2I1M2A24450	19	990
8	5	I1M2I1N0N04048	9	200
11	6	S4M2I1M2S43638	17.4	750

Figure C-13 Job Complete Report

BIBLIOGRAPHY

REFERENCES:

1. Gibson, Michael L. and Cary T. **Hughes. Systems Analysis and Design: A Comprehensive Methodology with Case.** MA: boyd & fraser, 1994.
2. Kendall, Kenneth E. and Julie E. Kendall. **System Analysis and Design,** Fourth Edition. NJ: Prentice-Hall, 1999.
3. Post, Gerald V. and David L. Anderson. **Management Information Systems: Solving Business Problems with Information Technology,** Second Edition. USA: McGraw Hill, 2000.
4. O'Brien J. A. **Management Information Systems: Managing Information Technology in the Internetworked Enterprise,** Fourth Edition. USA: McGraw Hill, 1999.

